



Price Catalog





CONTENTS

POOL DEHUMIDIFACATION UNIT	4
AIR HANDLING UNIT	6
JETFAN	7
HEAT RECOVERY UNIT	8
KITCHEN FAN UNIT	10
ELECTROSTATIC FILTER KITCHEN FAN UNIT	12
AXIAL FAN	14
SMOKE EXHAUST FAN	16
CELL TYPE FAN	18
FAN WITH CELL TYPE	20
DUCT TYPE FRESH AIR FAN FOR SHELTER	22
RECTANGLE AIR DUCT TYPE FAN	24
DUCT TYPE KITCHEN FAN	26
DUCT TYPE EXPROOF FAN	28
ROOF FAN WITH HORIZONTAL THROW	30
ROOF FAN WITH VERTICAL THROW	32
ROOF FAN WITH HORIZONTAL THROW MOTOR OUT OF AIR FLOW	34
ROOF FAN WITH VERTICAL THROW MOTOR OUT OF AIR FLOW	36



POOL DEHUMIDIFICATION UNIT

PRODUCT CODE	AIRFLOW (m ³ /h)	PRESSURE (Pa)	POOL SURFACE AREA (m ²)	POWER (kW)	POWER (kW)	VOLTAGE (V)	COP	FREQUENCY (Hz)	SOUND LEVEL dB(A)	PRICE (\$)
TNAS20	2527	300	72	1,29*2	2,33	380	4,12	50	72,00	19.600,00
TNAS35	4095	300	121	1,24*2	3,82	380	4,13	50	72,00	22.500,00
TNAS45	5046	400	157	1,73*2	5,18	380	4,1	50	72,00	26.900,00
TNAS57	6356	400	198	2,36*2	6,35	380	4,21	50	72,00	29.200,00
TNAS67	7498	400	234	2,43*2	7,29	380	4,32	50	72,00	31.500,00
TNAS85	9426	400	294	3,35*2	9,49	380	4,18	50	75,00	37.500,00
TNAS100	11093	500	346	4,25*2	11,15	380	4,18	50	75,00	40.000,00
TNAS130	14473	500	451	5,91*2	14,45	380	4,21	50	75,00	46.300,00
TNAS160	18115	500	555	7,84*2	18,2	380	4,18	50	77,00	52.850,00

TNAS

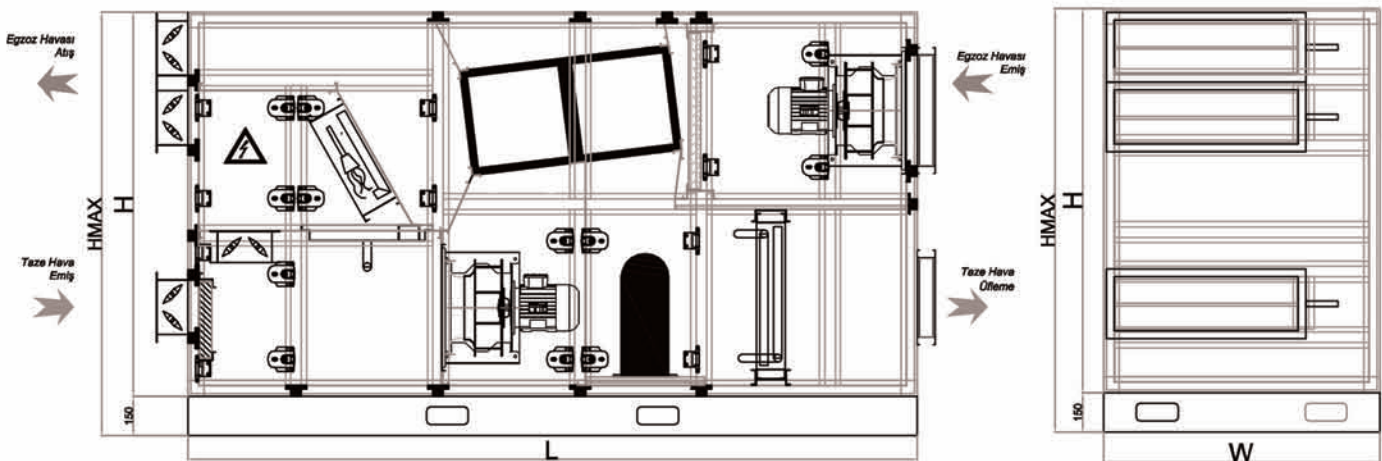
Smart Humidity Elimination Plant; Because it follows you and your requirements and needs and it offers you the comfortable and convenient air you want in a timely and economical way. After adjusting the settings you want, our system detects seasonal transitions according to time and controls it accordingly. It also uses a user friendly interface with 7" touch screen which is very practical to use. Remote technical service can be provided via internet connection feature and time and financial savings can be made from the technical staff.

Our main features which stand out from the standard systems;

- Years of continuous and uninterrupted use with the smart/smooth seasonal transition.
- Easy to use with its 7" touch screen.
- Remote monitoring and control via internet connection.

Dimensions

MODEL	L	H	W	HMAX
TNAS-20	2770	1460	1050	1610
TNAS-35	3150	1850	1050	2000
TNAS-45	3400	1850	1350	2000
TNAS-57	3500	2500	1350	2650
TNAS-67	3500	2500	1650	2650
TNAS-85	3765	2140	1650	2290
TNAS-100	3965	2140	1950	2290





AIR HANDLING UNIT

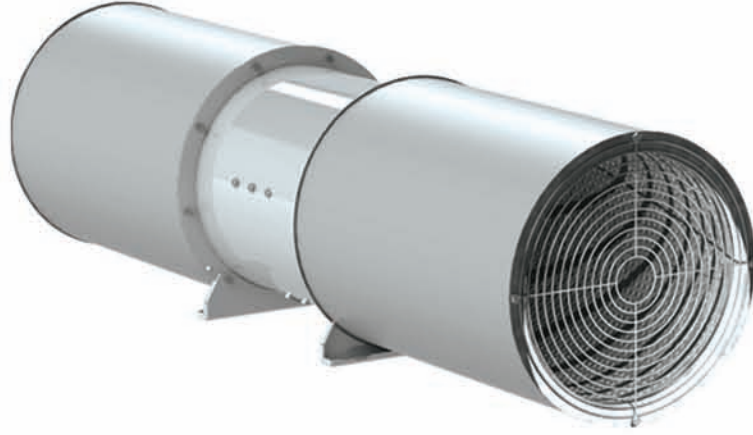
TKS

Air handling units which are modular designed and produced in a double walled construction with a wall thickness of 40 mm or 60 mm, with rock wool insulation, within the range of 1.000 m³ / h to 125.000 m³ / h air flow. TEZEL Air Handling Units are used for air conditioning in residential, commercial and industrial facilities. The exterior surfaces of A / C plants are painted galvanized sheet in RAL 9002 colour and the inner surfaces can be produced using galvanized, painted or stainless sheet according to demand and application.

In order to maintain one of the most important indicators of the performance of air conditioning units (impermeability/water-tightness), EPDM based seals are used to ensure the impermeability. In order to keep the efficiency of the serpentine and filters at a certain high level, the stray currents which may occur during airflow are prevented by way of using special designs. The filters have been chosen to suit the needs and requirements of the environment and the process.

The dampers used in air handling units and cell aspirators are manufactured by way of using aluminium profiles, aluminium wings and plastic based gears. The gearing teeth are out of air flow. Plastic gaskets are used in the damper wings so as to ensure water-tightness.

Plated, rotor or battery operated types of heat recovery components are used for energy efficiency which is of great importance nowadays. Depending on the air flow and the total static pressure difference, the fans driven by suitable power motors are selected with forward-sloped wings or backward sloping wings according to the requested design criteria. Performance test approved fans are used. Motors are IP55 class as standard and they conform to CE norms.



JETFAN

TJF

TJF series axial fans, They are developed to be used in closed parking lots, tunnels etc. where air is ventilated without the use of ducts. TEZEL Jet Fans produced in five series in accordance with EN 12101-3 standards as TJF315, TJF400, TJF450, TJF560, TJF630 provide air flow rate between 4.750 m³ / h and 36.000 m³ / h. High efficiency, aluminium casting and angle adjustable wings are used for our jet fans. One-Way "or "Reversible "types are available.

TJF series axial jet fans are designed by TEZEL engineers in order to enable that they can perform hot smoke exhaust function without interruption and continuously while working in fire situations. CE and EN certified engines with F300 fire resistance class are used.

- Axial fan rotors are forged aluminium and the wing angles can be adjusted.
- In order for the direction of air can be precisely adjusted over the Jet fan, air channelling wings (fins) are available.
- By means of the mufflers available on both sides, the sound emitted from suction side can be absorbed.
- The body type is round and it has BS729 hot dipping sheet steel body features.
- Axial fans of 315, 355, 400, 450, 560, 630 mm dimensions are used.
- Channelling wing is given for blowing side and wire cage is given as Standard for suction part.
- The motor, is selected as, based on its model, three phases, 2 polar, three phases, 2 revolutions, 2/4 poles. It has IP55 protection class.
- High temperature resistant terminal box is coupled over the fans.



HEAT RECOVERY UNIT

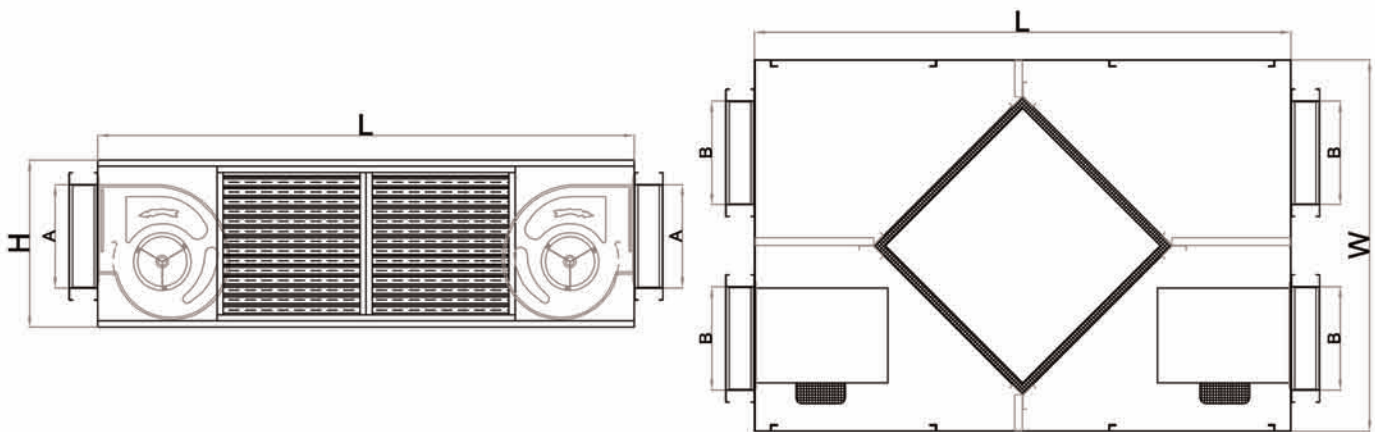
PRODUCT CODE	VOLTAGE (V)	FREQUENCY (Hz)	POWER (W)	SOUND LEVEL dB(A)	AIRFLOW (m ³ /h)	PRESSURE (Pa)	PRICE (\$)
TIGK10	230	50	150*2	45,00	1000	200	1.260,00
TIGK20	230	50	450*2	47,00	2000	200	1.685,00
TIGK30	230	50	600*2	50,00	3000	200	2.115,00
TIGK40	230	50	750*2	53,00	4000	200	2.400,00

TIGK

- Winged and double suction radial fans are used.
- Fans are selected and dimensioned taking into consideration the utmost efficiency and optimum level of sound.
- Washable synthetic air filters are class G4, They can be easily cleaned thanks to its intervention cap.
- The fans of the heat recycling devices are 6 speed and can be remotely controlled.
- Electrical heater control can be made as 3 stages.

Dimensions

MODEL	L	H	W	A	B
TIGK-1000	1300	405	900	250	250
TIGK-2000	1530	450	1055	360	360
TIGK-3000	1670	500	1115	410	410
TIGK-4000	1700	530	1175	440	440



Accessories

ELECTRICAL HEATER

PRODUCT CODE	AIRFLOW (m ³ /h)	VOLTAGE (V)	FREQUENCY (Hz)	POWER (kW)	PRICE (\$)
TELK4	1000	380	50	4,00	215,00
TELK8	2000	380	50	8,00	385,00
TELK10	3000	380	50	10,00	500,00
TELK12	4000	380	50	12,00	685,00



CONTROL PANEL

	PRODUCT CODE	PRICE (\$)
	TPNL	325,00



KITCHEN FAN UNIT

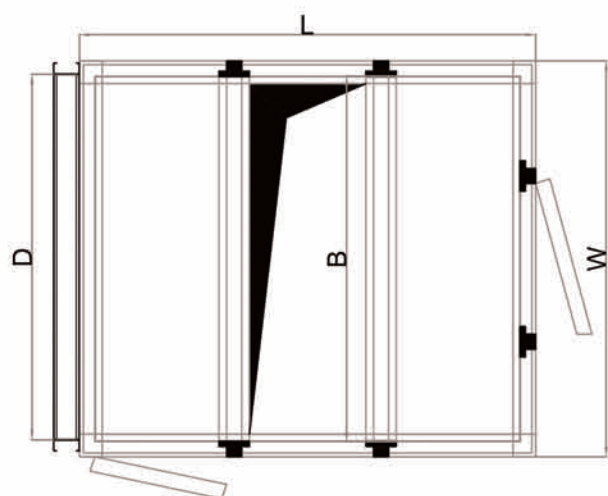
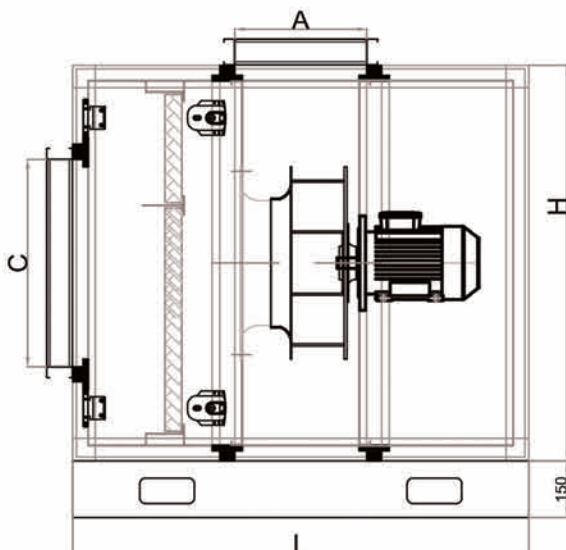
PRODUCT CODE	VOLTAGE (V)	FREQUENCY (Hz)	POWER (kW)	SPEED (Rpm)	SOUND LEVEL dB(A)	AIRFLOW (m ³ /h)	PRESSURE (Pa)	PRICE (\$)
THMF35	380	50	0,75	1450	73,00	2.000	200	1.715,00
THMF40	380	50	0,75	1450	75,00	3.000	200	1.885,00
THMF45	380	50	1,1	1450	77,00	5.000	200	2.230,00
THMF50	380	50	1,5	1450	78,00	7.000	300	2.860,00
THMF56	380	50	2,2	1450	80,00	10.000	400	3.500,00
THMF63	380	50	4	1450	80,00	15.350	500	4.000,00
THMF71	380	50	7,5	1450	80,00	24.000	500	5.650,00

THMF

- Cells consist of 50 mm rock-wool insulated double-walled, electrostatic powder painted panels.
- 40" aluminium profiles exclusively rolled for our company are used.
- Sound volume is very low thanks to double-wall panels.
- High efficiency; NICOTRA plug fans with high efficiency selected on computer environment with special selection program are used.
- Engine air flow is left out thus, it is not affected from oily and hot exhaust air.
- Metal filter is used on demand.
- Manufactured in line with TSE 60335-1 and TSE 60335-2-80 standards.

Dimensions

MODEL	L	H	W	A	B	C	D
THMF35	1030	750	750	275	670	400	400
THMF40	1100	750	750	300	670	450	450
THMF45	1135	750	1050	325	970	500	500
THMF50	1210	1050	1050	350	970	550	970
THMF56	1230	1050	1050	370	970	550	970
THMF63	1460	1350	1350	400	1270	650	1270
THMF71	1650	1650	1650	425	1570	700	1570





ELECTROSTATIC FILTER KITCHEN FAN UNIT

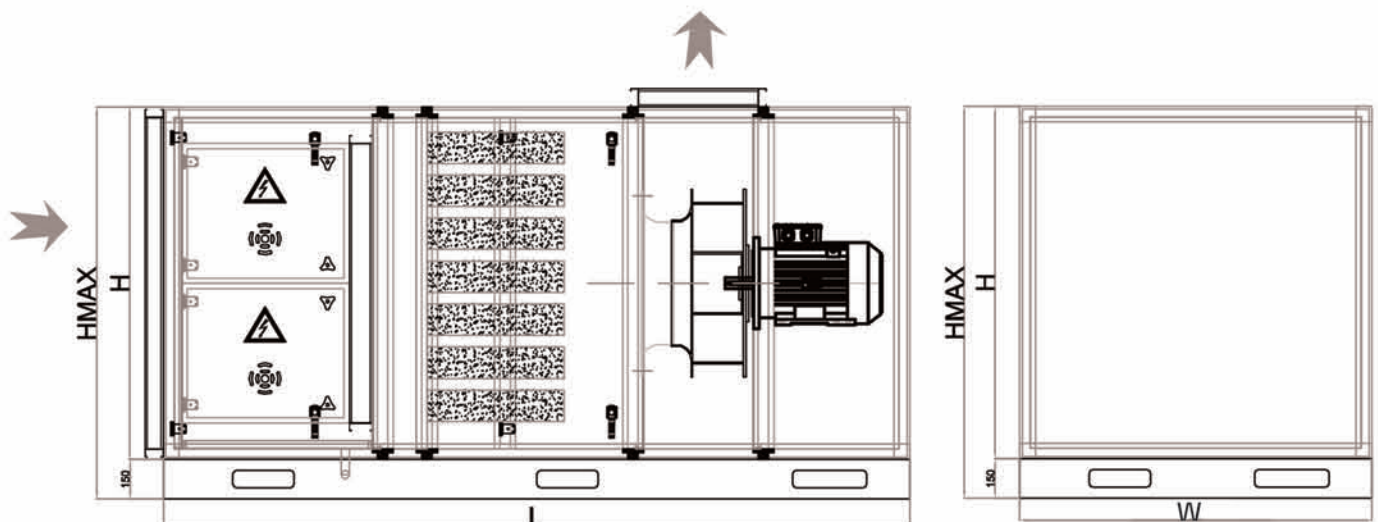
PRODUCT CODE	AIRFLOW (m ³ /h)	PRESSURE (Pa)	POWER (kW)	FREQUENCY (Hz)	VOLTAGE (V)	SOUND LEVEL dB(A)	PRICE (\$)
THMF-E50	5000	300	1,5	50	380	70	13.650,00
THMF-E75	7500	400	2,2	50	380	72	19.000,00
THMF-E100	10000	500	4	50	380	72	21.600,00
THMF-E150	15000	600	7,5	50	380	75	30.350,00
THMF-E225	22500	700	11	50	380	78	41.150,00

THMF-E

- With our devices, make TEZEL, Adhered to the air; Toxic chemical waste gas, oil, soot, odour and smoke molecules are loaded on the ionisation section with high voltage electric charge and adhered to the charged collecting surfaces in the collector sections like a magnet.
- Collective filter is easily removed from its place and after being washed and cleaned, it is mounted to its housing when dry. It is ready and functioning when the device is operated.
- Cells consist of 50 mm rockwool insulated double-walled, electrostatic powder painted panels.
- 40" aluminium profiles exclusively rolled for our company are used.
- Sound volume is very low thanks to double-wall panels.
- High efficiency NICOTRA plug fans with high efficiency selected on computer environment with special selection program are used.
- Engine air flow is left out thus; it is not affected from oily and hot exhaust air.

Dimensions

MODEL	L	H	W	HMAX
THMF-E50	2650	750	1350	900
THMF-E75	2650	750	1950	900
THMF-E100	2650	1350	1350	1500
THMF-E150	2860	1350	1950	1500
THMF-E225	2860	1950	1950	2100



TKAF

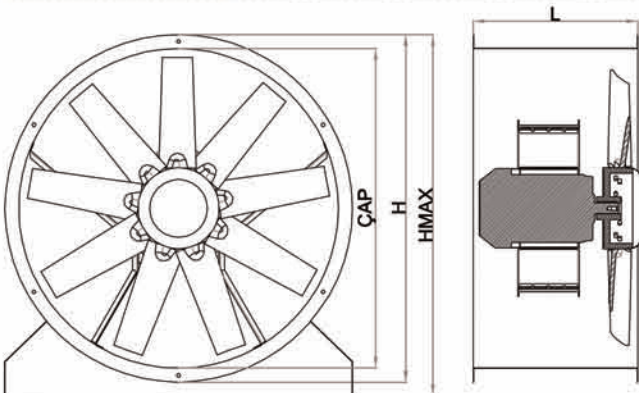


- Its self-flanged structure which displaces little space enables easy assembly to both channels.
- Based on customer requests, we have cup joint, cell type and roof type production.
- Fan wings (fins) are adjustable type and they are produced from high quality aluminium.
- BS729 hot dipping steel sheet body structure feature.
- Based on the physical properties of the environment, it enables vertical and horizontal ways of assembly.
- Accessories such as connection flange, terminal box, assembly assy. and vibration chocks are provided with the device as accessories.
- Dual and single speed engine alternatives are available.

AXIAL FAN

Dimensions

MODEL	ÇAP	H	L	HMAX
TDEF400	400	460	400	430
TDEF450	450	510	400	430
TDEF500	500	560	400	430
TDEF560	560	630	400	430
TDEF630	630	700	500	530
TDEF710	710	780	500	530
TDEF800	800	880	560	590
TDEF900	900	970	630	660
TDEF1000	1000	1070	630	660
TDEF1120	1120	1200	710	740
TDEF1250	1250	1330	710	740



PRODUCT CODE	POWER (kW)	SPEED (Rpm)	AIRFLOW (m ³ / h)					PRICE (\$)
			200Pa	300Pa	400Pa	500Pa	600Pa	
TKAF400	0,75	3000	4.800	3.600	2,500	-	-	1.200,00
	1,1	3000	5.600	4.800	3,700	-	-	1.230,00
	1,5	3000	6.300	5.500	4,500	3,500	-	1.320,00
TKAF450	1,5	3000	8.000	6.800	5,500	4,300	3200	1.400,00
	2,2	3000	9.500	8.500	7,500	6,500	4500	1.550,00
	3	3000	11.500	10.000	9,000	7,000	5000	1.690,00
TKAF500	4	3000	14.500	13.000	12,000	10,500	9000	2.000,00
	5,5	3000	16.000	15.000	13,500	12,500	10500	2.320,00
TKAF560	4	3000	17.000	15.500	14,500	12,500	10000	2.060,00
	7,5	3000	21.500	20.000	19,000	17,500	16500	2.630,00
TKAF630	4	3000	19.000	17.200	15,500	14,000	11500	2.200,00
	5,5	3000	22.000	20.000	19,000	17,000	15000	2.520,00
	7,5	3000	26.000	24.000	22,500	21,500	19000	2.780,00
TKAF710	2,2	1500	15.000	10.000	-	-	-	1.780,00
	3	1500	17.500	14.000	9,000	-	-	1.950,00
	4	1500	20.000	17.500	12,500	-	-	2.180,00
TKAF800	4	1500	25.000	21.500	16,000	12,000	-	2.320,00
	5,5	1500	30.000	25.000	20,000	14,000	-	2.630,00
	7,5	1500	34.000	30.000	26,000	19,000	-	2.890,00
TKAF900	5,5	1500	35.000	30.000	22,500	18,000	14000	2.780,00
	7,5	1500	39.000	36.000	31,000	25,000	18000	3.030,00
	11	1500	47.500	42.000	38,000	32,000	22000	3.950,00
TKAF1000	7,5	1500	46.000	40.000	35,000	27,500	22500	3.180,00
	11	1500	55.000	50.000	45,000	37,500	30000	4.090,00
	15	1500	60.000	55.000	50,000	45,000	37500	4.660,00
	18,5	1500	67.500	65.000	57,500	51,000	45000	5.180,00
TKAF1120	11	1500	57.000	52.000	48,000	42,500	35000	4.290,00
	15	1500	65.000	60.000	57,500	52,000	42500	4.890,00
	18,5	1500	75.000	70.000	67,000	62,000	52000	5.400,00
	22	1500	84.000	80.000	75,000	70,000	62500	5.780,00
TKAF1250	15	1500	70.000	65.000	60,000	52,500	47500	5.630,00
	18,5	1500	80.000	75.000	70,000	65,000	60000	6.180,00
	22	1500	87.500	82.500	77,500	72,500	67500	6.550,00
	30	1500	105.000	96.000	90,000	86,000	82500	7.750,00



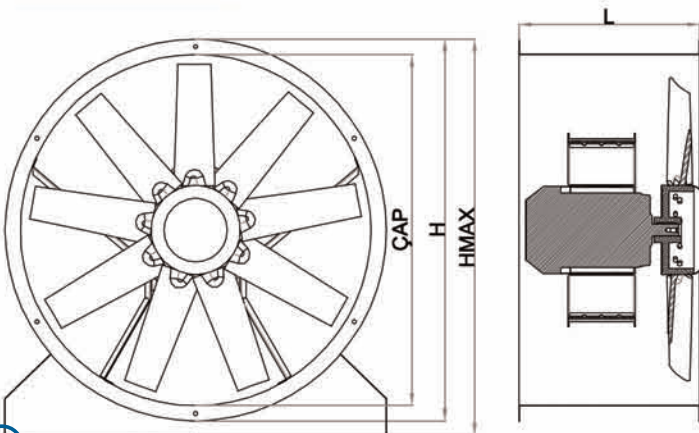
SMOKE EXHAUST FAN

TDEF

- Its self-flanged structure which displaces little space enables easy assembly to both channels.
- Based on customer requests, we have cup joint- cell type and roof type production.
- Fan wings (fins) are adjustable type and they are produced from high quality aluminium.
- B5729 hot dipping steel sheet body structure feature.
- Based on the physical properties of the environment, it enables vertical and horizontal ways of assembly.
- Accessories such as connection flange, terminal box, assembly assy. and vibration chocks are provided with the device as accessories.
- Dual and single speed engine alternatives are available.

Dimensions

MODEL	ÇAP	H	L	HMAX
TDEF400	400	460	400	430
TDEF450	450	510	400	430
TDEF500	500	560	400	430
TDEF560	560	630	400	430
TDEF630	630	700	500	530
TDEF710	710	780	500	530
TDEF800	800	880	560	590
TDEF900	900	970	630	660
TDEF1000	1000	1070	630	660
TDEF1120	1120	1200	710	740
TDEF1250	1250	1330	710	740



PRODUCT CODE	POWER (kW)	SPEED (Rpm)	AIRFLOW (m ³ / h)					PRICE (\$)
			200Pa	300Pa	400Pa	500Pa	600Pa	
TDEF400	0,75	3000	4.800	3.600	2,500	-	-	1.200,00
	1,1	3000	5.600	4.800	3,700	-	-	1.230,00
	1,5	3000	6.300	5.500	4,500	3,500	-	1.320,00
TDEF450	1,5	3000	8.000	6.800	5,500	4,300	3200	1.400,00
	2,2	3000	9.500	8.500	7,500	6,500	4500	1.550,00
	3	3000	11.500	10.000	9,000	7,000	5000	1.690,00
TDEF500	4	3000	14.500	13.000	12,000	10,500	9000	2.000,00
	5,5	3000	16.000	15.000	13,500	12,500	10500	2.320,00
TDEF560	4	3000	17.000	15.500	14,500	12,500	10000	2.060,00
	7,5	3000	21.500	20.000	19,000	17,500	16500	2.630,00
TDEF630	4	3000	19.000	17.200	15,500	14,000	11500	2.200,00
	5,5	3000	22.000	20.000	19,000	17,000	15000	2.520,00
	7,5	3000	26.000	24.000	22,500	21,500	19000	2.780,00
TDEF710	2,2	1500	15.000	10.000	-	-	-	1.780,00
	3	1500	17.500	14.000	9,000	-	-	1.950,00
	4	1500	20.000	17.500	12,500	-	-	2.180,00
TDEF800	4	1500	25.000	21.500	16,000	12,000	-	2.320,00
	5,5	1500	30.000	25.000	20,000	14,000	-	2.630,00
	7,5	1500	34.000	30.000	26,000	19,000	-	2.890,00
TDEF900	5,5	1500	35.000	30.000	22,500	18,000	14000	2.780,00
	7,5	1500	39.000	36.000	31,000	25,000	18000	3.030,00
	11	1500	47.500	42.000	38,000	32,000	22000	3.950,00
TDEF1000	7,5	1500	46.000	40.000	35,000	27,500	22500	3.180,00
	11	1500	55.000	50.000	45,000	37,500	30000	4.090,00
	15	1500	60.000	55.000	50,000	45,000	37500	4.660,00
	18,5	1500	67.500	65.000	57,500	51,000	45000	5.180,00
TDEF1120	11	1500	57.000	52.000	48,000	42,500	35000	4.290,00
	15	1500	65.000	60.000	57,500	52,000	42500	4.890,00
	18,5	1500	75.000	70.000	67,000	62,000	52000	5.400,00
	22	1500	84.000	80.000	75,000	70,000	62500	5.780,00
TDEF1250	15	1500	70.000	65.000	60,000	52,500	47500	5.630,00
	18,5	1500	80.000	75.000	70,000	65,000	60000	6.180,00
	22	1500	87.500	82.500	77,500	72,500	67500	6.550,00
	30	1500	105.000	96.000	90,000	86,000	82500	7.750,00



CELL TYPE FAN

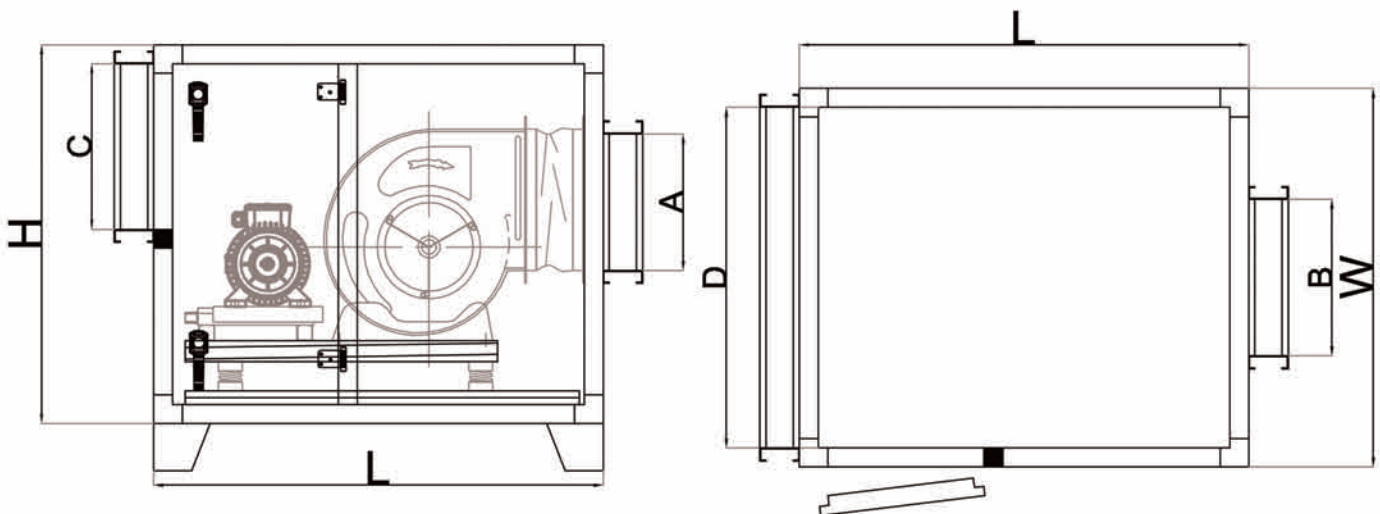
PRODUCT CODE	VOLTAGE (V)	FREQUENCY (Hz)	POWER (kW)	SOUND LEVEL dB(A)	AIRFLOW (m ³ /h)	PRESSURE (Pa)	PRICE (\$)
THF7	380	50	0.75	73.00	2500	250	950,00
THF9	380	50	1.1	75.00	3500	350	1.080,00
THF10	380	50	1.5	77.00	5000	350	1.190,00
THF12	380	50	2.2	78.00	7500	350	1.460,00
THF15	380	50	3	80.00	10000	350	1.720,00
THF18	380	50	4	82.00	15000	350	2.150,00

THF

- Cells consist of 50 mm rock-wool insulated double-walled, electrostatic powder painted panels.
- 40" aluminium profiles exclusively rolled for our company are used.
- Sound volume is very low thanks to double-wall panels.
- Thanks to its compact design and easily replaceable suction/lift-force features, they can perform aspiration and ventilation functions.
- Full impermeability/water tightness can be maintained by means of a special sealing system
- Manufactured in line with TSE 60335-1 and TSE 60335-2-80 standards.

Dimensions

MODEL	L	H	W	A	B	C	D
THF7	820	650	650	210	230	250	570
THF9	900	700	700	260	300	300	620
THF10	950	800	800	290	330	350	720
THF12	1050	900	900	340	395	420	820
THF15	1150	1000	1000	405	470	500	920





FAN WITH CELL TYPE

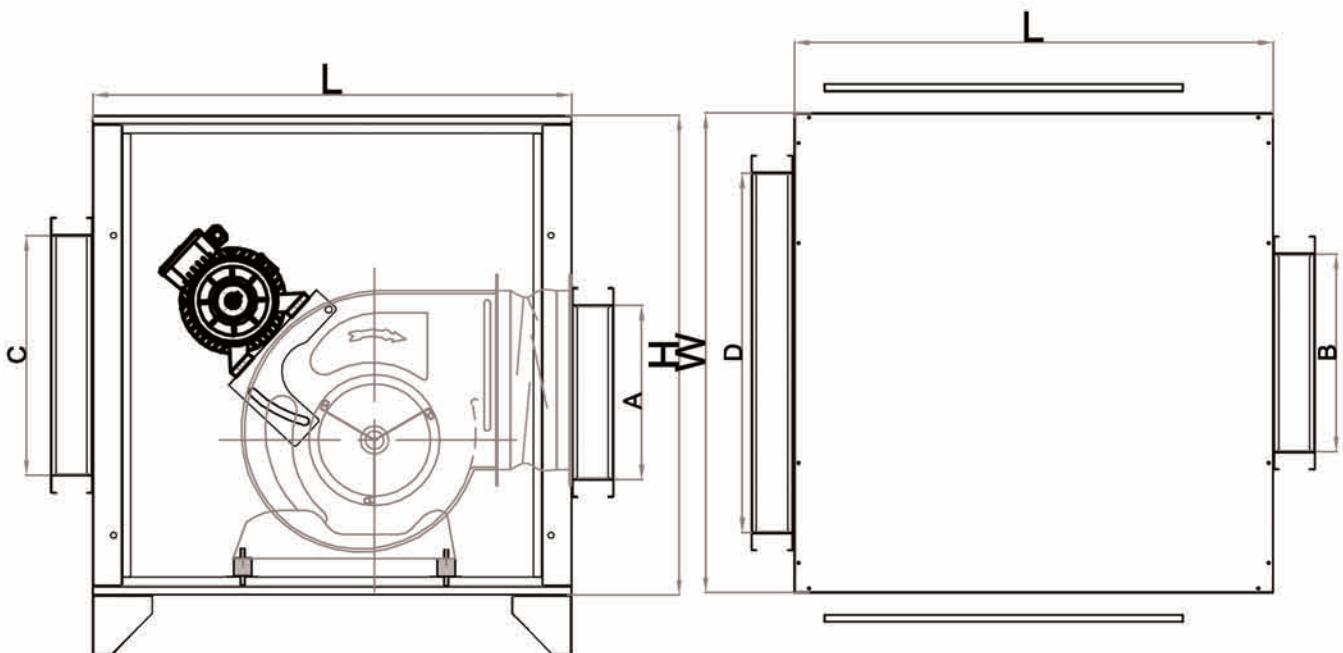
PRODUCT CODE	VOLTAGE (V)	FREQUENCY (Hz)	POWER (kW)	SOUND LEVEL dB(A)	AIRFLOW (m ³ /h)	PRESSURE (Pa)	PRICE (\$)
TEH7	380	50	0.75	73.00	2500	250	745,00
TEH9	380	50	1.1	75.00	3500	350	855,00
TEH10	380	50	1.5	77.00	5000	350	970,00
TEH12	380	50	2.2	78.00	7500	350	1.185,00
TEH15	380	50	3	80.00	10000	350	1.385,00

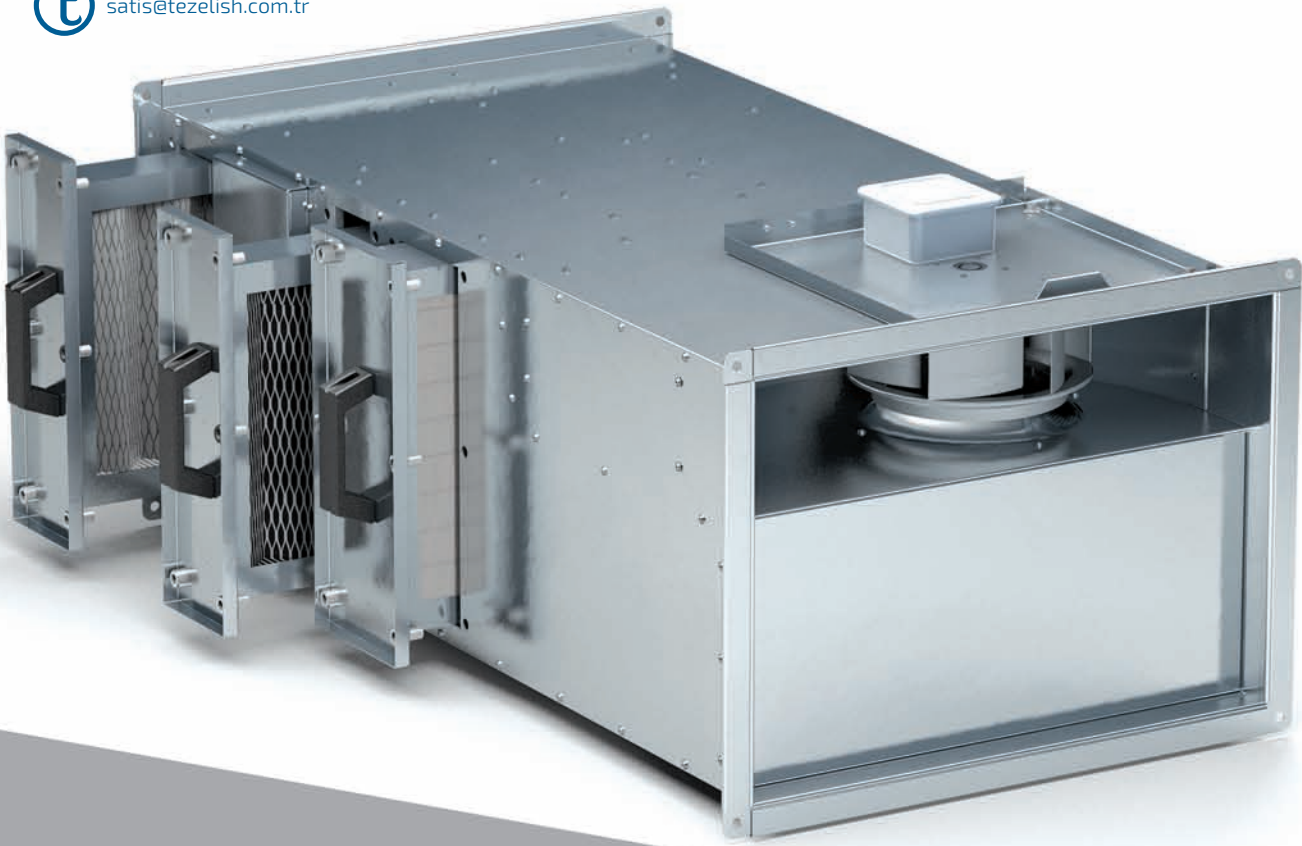
TEH

- Panels are manufactured as single walled and they are coated with 10 mm. acoustic insulation.
- They consist of electrostatic powder painted panels.
- They offer an economic solution thanks to its no-profile structure with no walls.
- Thanks to its compact design and easily replaceable suction/lift-force features, they can perform aspiration and ventilation functions.
- Full impermeability/water tightness can be maintained by means of a special sealing system
- Manufactured in line with TSE 60335-1 and TSE 60335-2-80 standards.

Dimensions

MODEL	L	H	W	A	B	C	D
TEH7	600	600	600	210	230	300	450
TEH9	700	700	700	260	300	300	500
TEH10	800	800	800	290	330	400	600
TEH12	900	900	900	340	395	500	700
TEH15	950	950	950	405	470	600	800





DUCT TYPE FRESH AIR FAN FOR SHELTER

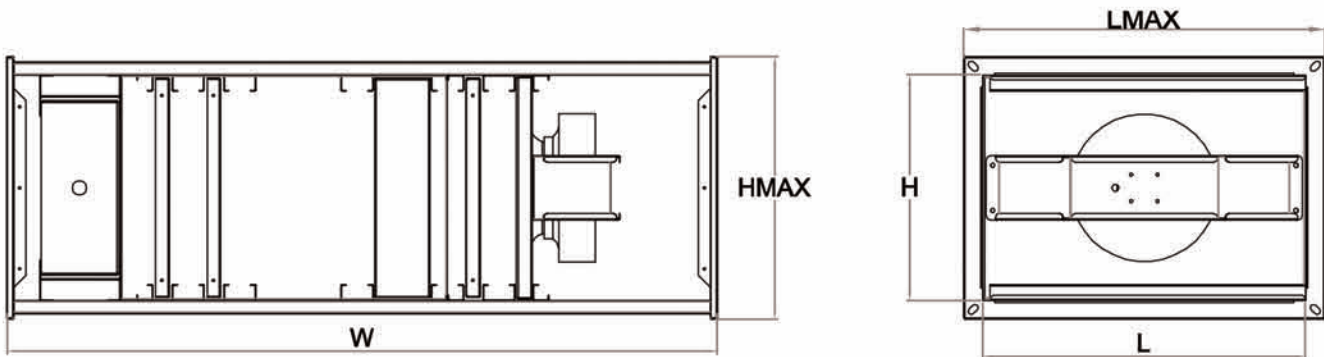
PRODUCT CODE	VOLTAGE (V)	FREQUENCY (Hz)	POWER (W)	SPEED (Rpm)	SOUND LEVEL dB(A)	AIRFLOW (m ³ /h)	PRESSURE (Pa)	PRICE (\$)
TKSF50	220	50	105	2200	66.00	450	200	572,00
TKSF60	220	50	150	2440	72.00	750	200	629,00
TKSF70	220	50	195	2020	72.00	1200	200	686,00
TKSF80	220	50	540	1290	68.00	2000	200	1.115,00
TKSF90	220	50	1300	1300	75.00	3000	200	1.386,00
TKSF100	380	50	1800	1250	77.00	4500	200	2.143,00

TKSF

- Body is manufactured from galvanized steel.
- It was designed to be used with rectangular channels.
- By-pass operation is performed by air-adjusting damper which can work manually exclusively (which is specially manufactured in the case) or servo motor.
- All equipment can be easily accessed with service and maintenance purposes.
- Our device is equipped with and includes radial fan with backward curved blade, G4 filter, Carbon filter and Radioactive filter (optional lead separator).
- Manufactured in line with TSE 60335-1 and TSE 60335-2-80 standards.

Dimensions

MODEL	L	H	W	LMAX	HMAX
TKSF50	500	350	1100	550	400
TKSF60	600	350	1100	650	400
TKSF70	700	350	1100	750	400
TKSF80	900	500	1200	950	550
TKSF90	900	550	1250	950	600





RECTANGLE AIR DUCT TYPE FAN

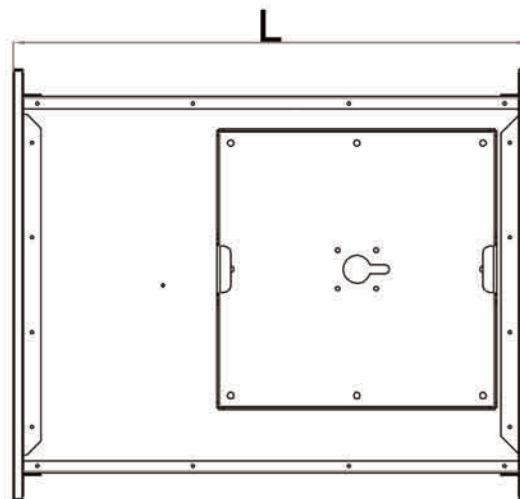
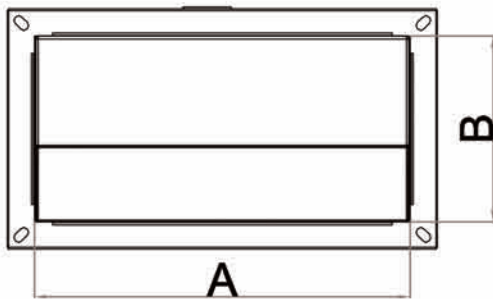
PRODUCT CODE	VOLTAGE (V)	FREQUENCY (Hz)	POWER (W)	SPEED (Rpm)	SOUND LEVEL dB(A)	AIRFLOW (m ³ /h)	PRICE (\$)
TDKF3015	220	50	66	2300	64,00	560	162,00
TDKF4020A	220	50	105	2200	66,00	1050	198,00
TDKF4020B	220	50	150	2440	72,00	1350	222,00
TDKF5025	220	50	195	2020	70,00	1750	273,00
TDKF6030	220	50	145	1390	63,00	2000	385,00
TDKF6035A	220	50	190	1350	61,00	2500	443,00
TDKF6035B	220	50	500	1380	65,00	4100	529,00
TDKF7040	220	50	540	1290	68,00	5600	743,00
TDKF8050	380	50	1300	1300	75,00	9000	1.343,00
TDKF10050	380	50	1800	1250	77,00	10000	1.572,00

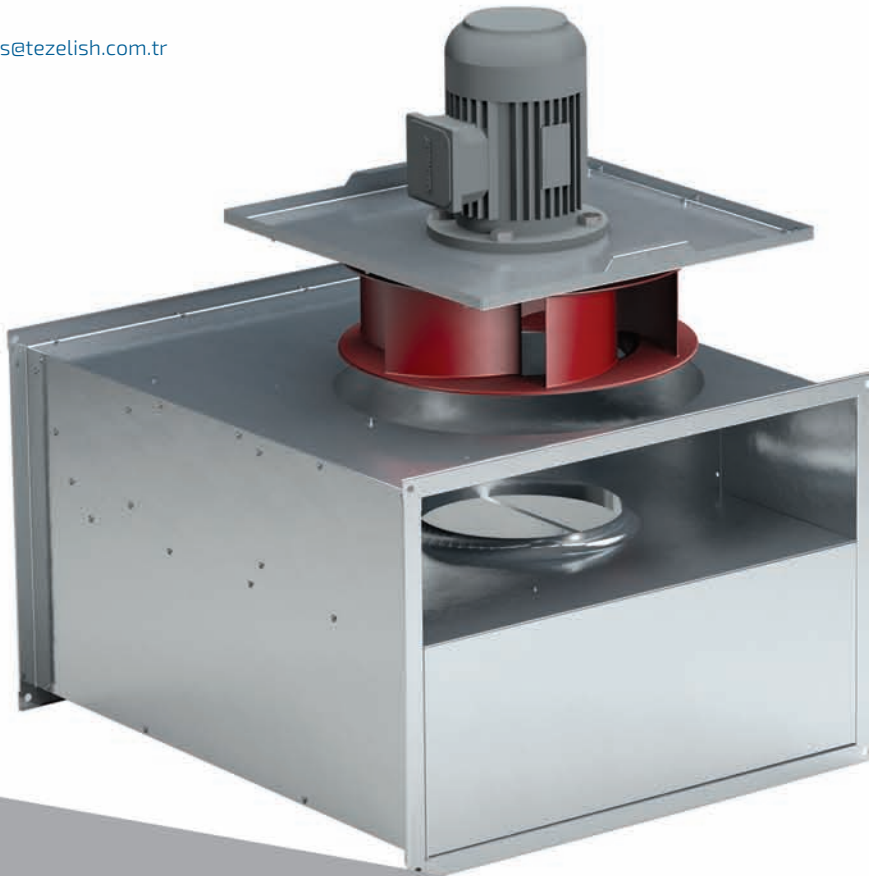
TDKF

- Body is manufactured from galvanized steel.
- It was designed to be used with rectangular channels
- A special level of water-tightness was aimed at with its special design.
- By means of its aerodynamic casing construction, and radial fan with backward curved blades, it operates with high efficiency and at lower decibels
- Manufactured in line with TSE 60335-1 and TSE 60335-2-80 standards.

Dimensions

MODEL	A	B	L
TDKF3015	300	150	450
TDKF4020A	400	200	550
TDKF4020B	400	200	550
TDKF5025	500	250	650
TDKF6030	600	300	650
TDKF6035A	600	350	650
TDKF6035B	600	350	650
TDKF7040	700	400	750
TDKF8050	800	500	850





DUCT TYPE KITCHEN FAN

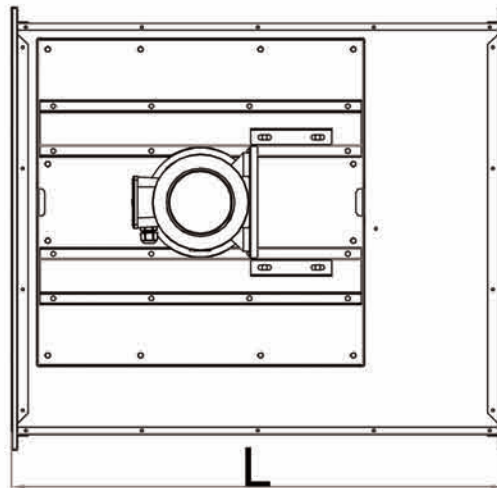
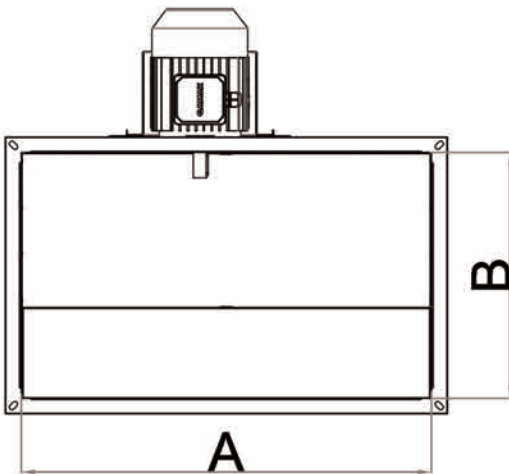
PRODUCT CODE	VOLTAGE (V)	FREQUENCY (Hz)	POWER (kW)	SPEED (Rpm)	SOUND LEVEL dB(A)	AIRFLOW (m ³ /h)				PRICE (\$)
						100Pa	200Pa	300Pa	400Pa	
TKMF35	380	50	0,75	1450	73,00	2990	2498	1820	-	900,00
TKMF40	380	50	0,75	1450	75,00	4304	3792	3167	2275	1.130,00
TKMF45	380	50	1,1	1450	77,00	-	5628	5036	4246	1.286,00
TKMF50	380	50	1,5	1450	78,00	-	8306	7690	6950	1.458,00
TKMF56	380	50	2,2	1450	80,00	-	12032	11350	10600	1.860,00

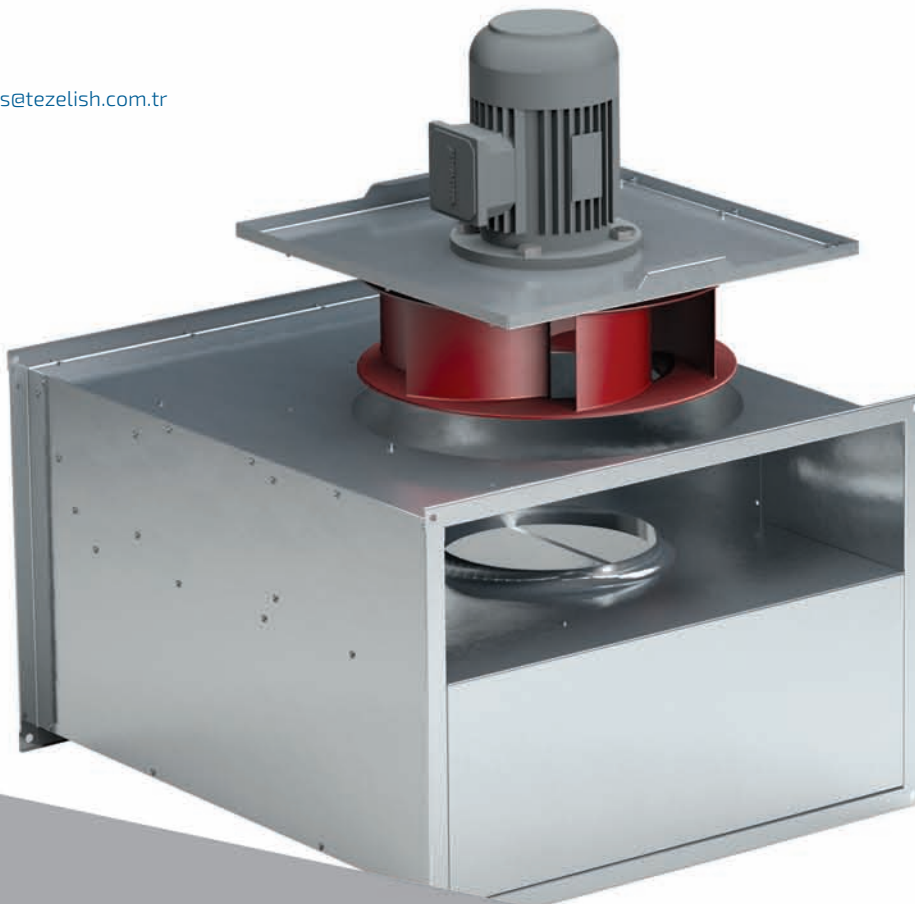
TKMF

- Body is manufactured from galvanized steel.
- It was designed and produced to be used with rectangular channels.
- High efficiency NICOTRA plug fans with high efficiency selected on computer environment with special selection program are used.
- Engine air flow is left out thus; it is not affected from oily and hot exhaust air.
- Metal filter is used on demand.
- Manufactured in line with TSE 60335-1 and TSE 60335-2-80 standards.

Dimensions

MODEL	A	B	L
TKMF35	600	400	750
TKMF40	700	450	800
TKMF45	750	450	900
TKMF50	800	500	900
TKMF56	900	550	1000





DUCT TYPE EXPROOF FAN

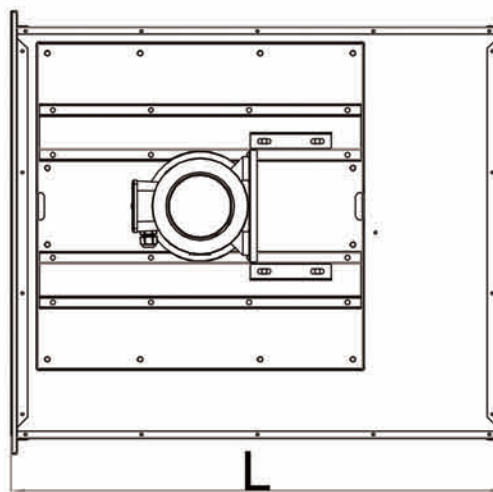
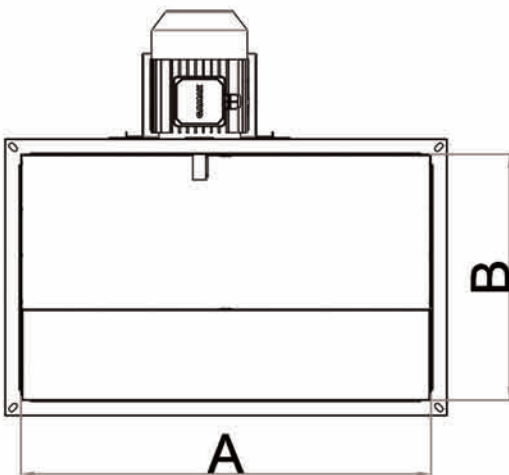
PRODUCT CODE	VOLTAGE (V)	FREQUENCY (Hz)	POWER (kW)	SPEED (Rpm)	SOUND LEVEL dB(A)	AIRFLOW (m ³ /h)				PRICE (\$)
						100Pa	200Pa	300Pa	400Pa	
TKMF-EX35	380	50	0,75	1450	73,00	2990	2498	1820	-	2.400,00
TKMF-EX40	380	50	0,75	1450	75,00	4304	3792	3167	2275	2.686,00
TKMF-EX45	380	50	1,1	1450	77,00	-	5628	5036	4246	3.143,00
TKMF-EX50	380	50	1,5	1450	78,00	-	8306	7690	6950	3.715,00
TKMF-EX56	380	50	2,2	1450	80,00	-	12032	11350	10600	5.000,00

TKMF-EX

- ATEX certified motors and fans designed for explosive environments are used.
- Body is manufactured from galvanized steel.
- It was designed and produced to be used with rectangular channels.
- High efficiency NICOTRA plug fans with high efficiency selected on computer environment with special selection program are used.
- Engine air flow is left out thus, it is not affected from oily and hot exhaust air.
- Manufactured in line with TSE 60335-1 and TSE 60335-2-80 standards.

Dimensions

MODEL	A	B	L
TKMF35	600	400	750
TKMF40	700	450	800
TKMF45	750	450	900
TKMF50	800	500	900
TKMF56	900	550	1000





ROOF FAN WITH HORIZONTAL THROW

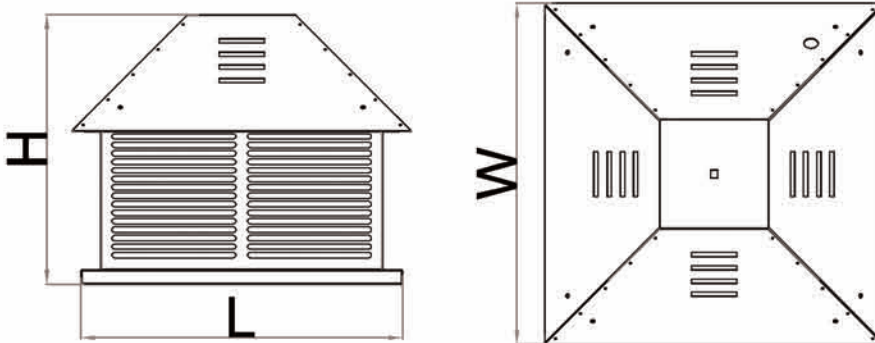
PRODUCT CODE	VOLTAGE (V)	FREQUENCY (Hz)	POWER (W)	SPEED (Rpm)	SOUND LEVEL dB(A)	AIRFLOW (m ³ /h)	PRICE (\$)
TCF190	220	50	66	2300	64,00	560	172,00
TCF225	220	50	105	2200	66,00	1050	192,00
TCF250	220	50	150	2440	72,00	1350	218,00
TCF280	220	50	195	2020	70,00	1750	235,00
TCF315	220	50	145	1390	63,00	2000	329,00
TCF355	220	50	190	1350	61,00	2500	395,00
TCF400	220	50	500	1380	65,00	4100	530,00
TCF450	220	50	540	1290	68,00	5600	715,00
TCF500	380	50	1300	1300	75,00	9000	1.330,00
TCF560	380	50	1800	1250	77,00	10000	1.575,00

TCF

- Body is manufactured from galvanized steel plate and it is RAL 9002 Electrostatic powder painted .
- Our fans which we modelled on solidworks program are processed automatically on CNC benches and they are rendered ready for assembly.
- By means of its aerodynamic casing construction, and radial fan with backward curved blades, it operates with high efficiency and at lower decibels
- Overheating of the engine is prevented by means of the air entry grills at the roof entry.
- Its compact structure enables easy and convenient assembly.
- By means of its removable top, easy access and intervention to the engine and fan is possible.
- By means of its protective sheet plate, any external intervention from foreign objects which may contact with the fan while the engine is working will be prevented.

Dimensions

MODEL	L	W	H
TCF225	270	380	380
TCF250	280	380	380
TCF280	280	415	415
TCF355	360	470	470
TCF400	470	570	570
TCF450	530	620	620
TCF500	530	670	670





ROOF FAN WITH VERTICAL THROW

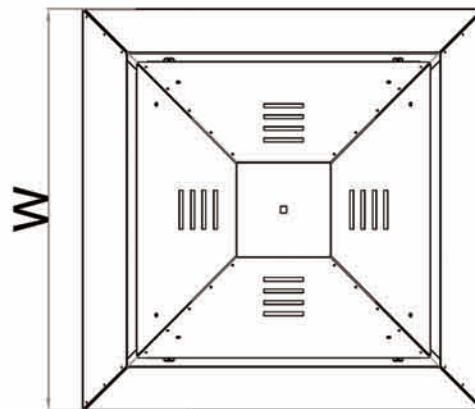
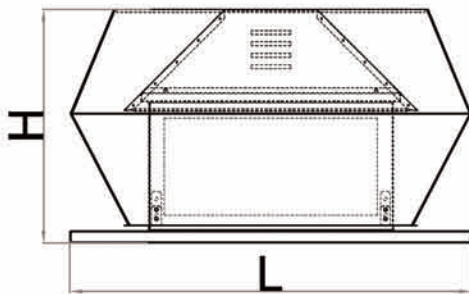
PRODUCT CODE	VOLTAGE (V)	FREQUENCY (Hz)	POWER (W)	SPEED (Rpm)	SOUND LEVEL dB(A)	AIRFLOW (m ³ /h)	PRICE (\$)
TDCF190	220	50	66	2300	64,00	560	189,00
TDCF225	220	50	105	2200	66,00	1050	212,00
TDCF250	220	50	150	2440	72,00	1350	240,00
TDCF280	220	50	195	2020	70,00	1750	258,00
TDCF315	220	50	145	1390	63,00	2000	363,00
TDCF355	220	50	190	1350	61,00	2500	430,00
TDCF400	220	50	500	1380	65,00	4100	586,00
TDCF450	220	50	540	1290	68,00	5600	786,00
TDCF500	380	50	1300	1300	75,00	8000	1.475,00
TDCF560	380	50	1800	1250	77,00	10000	1.715,00

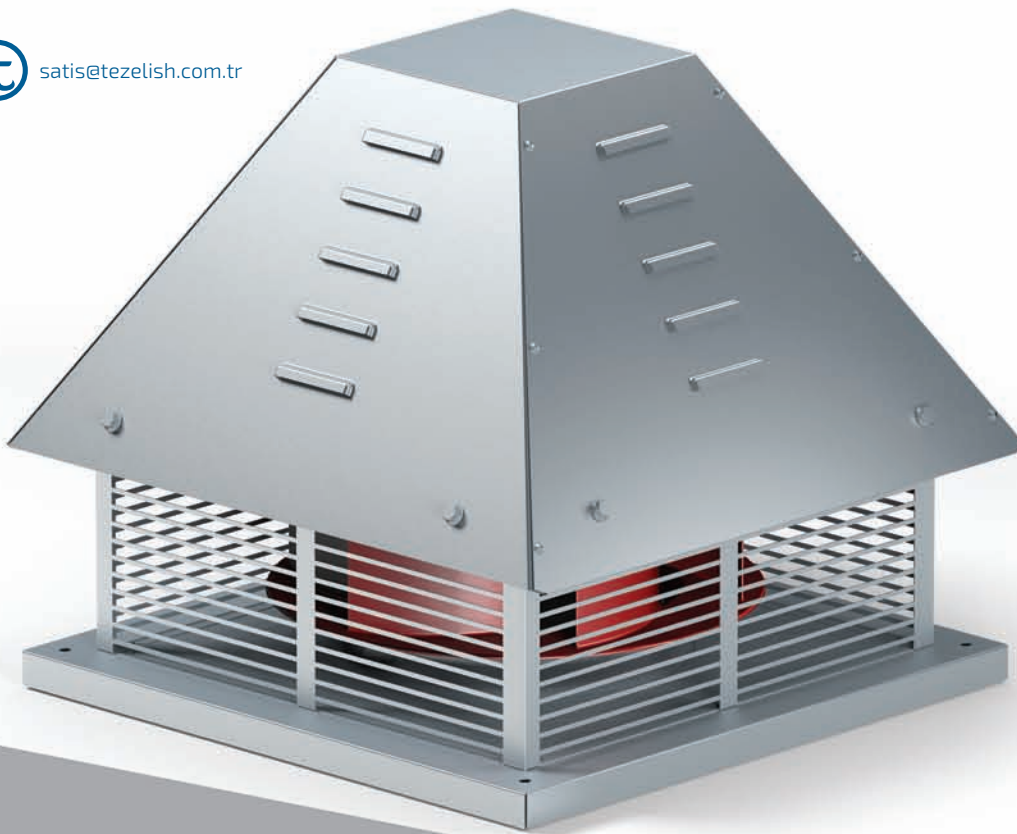
TDCF

- Body is manufactured from galvanized steel plate and it is RAL 9002 Pelectrostatic powder painted.
- Our fans which we modelled on solidworks program are processed automatically on CNC benches and they are rendered ready for assembly.
- By means of its aerodynamic casing construction, and radial fan with backward curved blades, it operates with high efficiency and at lower decibels
- Overheating of the engine is prevented by means of the air entry grills at the roof entry.
- Its compact structure enables easy and convenient assembly.
- By means of its removable top, easy access and intervention to the engine and fan is possible.
- By means of its protective sheet plate, any external intervention from foreign objects which may contact with the fan while the engine is working will be prevented.

Dimensions

MODEL	H	L	W
TDCF225	270	600	600
TDCF250	280	600	600
TDCF280	280	635	635
TDCF355	360	720	720
TDCF400	475	820	820
TDCF450	530	865	865
TDCF500	530	920	920





ROOF FAN WITH HORIZONTAL
THROW MOTOR OUT OF
AIR FLOW

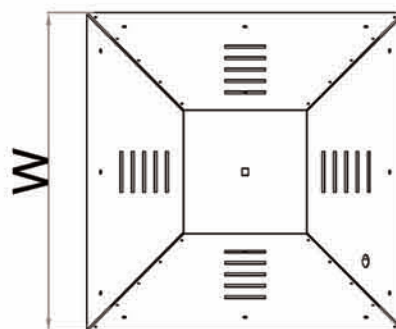
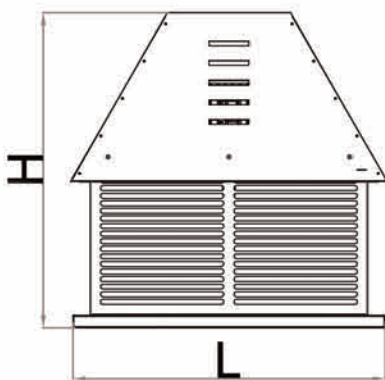
PRODUCT CODE	VOLTAGE (V)	FREQUENCY (Hz)	POWER (kW)	SPEED (Rpm)	SOUND LEVEL dB(A)	AIRFLOW (m ³ /h)				PRICE (\$)
						100Pa	200Pa	300Pa	400Pa	
TBF35	380	50	0,75	1450	73,00	2990	2498	1820	-	900,00
TBF40	380	50	0,75	1450	75,00	4304	3792	3167	2275	1.130,00
TBF45	380	50	1,1	1450	77,00	-	5628	5036	4246	1.286,00
TBF50	380	50	1,5	1450	78,00	-	8306	7690	6950	1.458,00
TBF56	380	50	2,2	1450	80,00	-	12032	11350	10600	1.858,00
TBF63	380	50	4	1450	80,00	-	-	16980	16200	2.286,00

TBF

- Body is manufactured from galvanized steel plate and it is RAL 9002 Pelectro-static powder painted.
- High efficiency NICOTRA plug fans with high efficiency selected on computer environment with special selection program are used.
- Engine air flow is left out thus, it is not affected from oily and hot exhaust air.
- Overheating of the engine is prevented by means of the air entry grills at the roof entry.
- Its compact structure enables easy and convenient assembly.
- By means of its removable top, easy access and intervention to the engine and fan is possible.
- By means of its protective sheet plate, any external intervention from foreign objects which may contact with the fan while the engine is working will be prevented.

Dimensions

MODEL	H	L	W
TBF35	525	470	470
TBF40	680	570	570
TBF45	625	620	620
TBF50	680	750	750
TBF56	730	800	800
TBF63	765	950	950





ROOF FAN WITH VERTICAL THROW

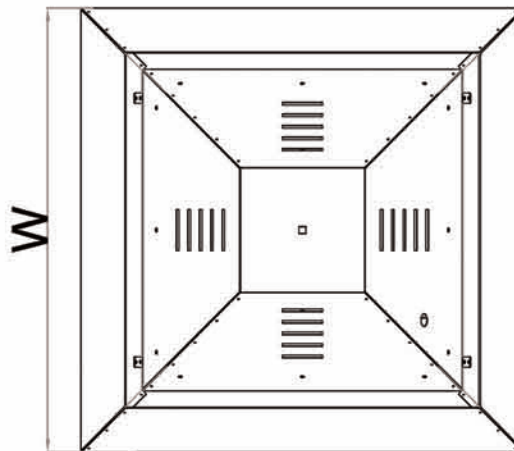
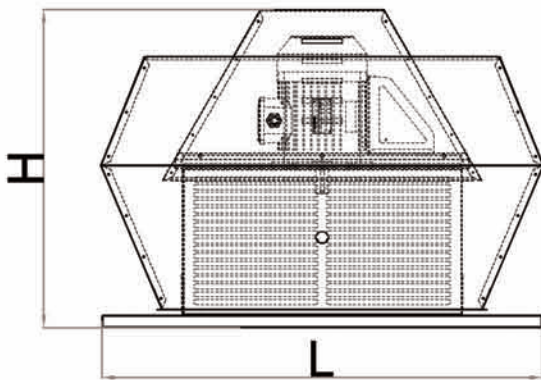
PRODUCT CODE	VOLTAGE (V)	FREQUENCY (Hz)	POWER (kW)	SPEED (Rpm)	SOUND LEVEL dB(A)	AIRFLOW (m ³ /h)				PRICE (\$)
						100Pa	200Pa	300Pa	400Pa	
TDBF35	380	50	0,75	1450	73,00	2990	2498	1820	-	1.000,00
TDBF40	380	50	0,75	1450	75,00	4304	3792	3167	2275	1.243,00
TDBF45	380	50	1,1	1450	77,00	-	5628	5036	4246	1.415,00
TDBF50	380	50	1,5	1450	78,00	-	8306	7690	6950	1.600,00
TDBF56	380	50	2,2	1450	80,00	-	12032	11350	10600	2.050,00
TDBF63	380	50	4	1450	80,00	-	-	16980	16200	2.560,00

TDBF

- Body is manufactured from galvanized steel plate and it is RAL 9002 Pelectrostatic powder painted.
- High efficiency NICOTRA plug fans with high efficiency selected on computer environment with special selection program are used.
- Engine air flow is left out thus, it is not affected from oily and hot exhaust air.
- Overheating of the engine is prevented by means of the air entry grills at the roof entry.
- Its compact structure enables easy and convenient assembly.
- By means of its removable top, easy access and intervention to the engine and fan is possible.
- By means of its protective sheet plate, any external intervention from foreign objects which may contact with the fan while the engine is working will be prevented.

Dimensions

MODEL	H	L	W
TDBF35	525	720	720
TDBF40	580	820	820
TDBF45	625	865	865
TDBF50	680	750	750
TDBF56	730	800	800
TDBF63	765	950	950



REFERENCES

İBB KÜÇÜKÇEKMECE ZEMİNALTI OTOPARKI • İBB YENİKAPI METRO İSTASYONU • İBB M5 HATTI ÇARŞI İSTASYONU • TÜRK TELEKOM ŞİŞLİ-ESENTEPE KAMPÜSÜ • TOKİ MALTEPE KYK • TOKİ KAYAŞEHİR-KAYABAŞI • GEBZE YÜZYIL HASTANESİ • KONYA EĞİTİM ARAŞTIRMA HASTANESİ • ANTALYA-NUMA BAY OTEL 5* • İTO BULGURLU TİCARET MESLEK LİSESİ • VEGA OKULLARI BAHÇEŞEHİR KAMPÜSÜ • ZEYTİNBURNU TURKCELL OKUL • BİLFEN ANAOKULU • MAVİGÜN OKULU • DOĞA KOLEJİ • BAHÇEŞEHİR KOLEJİ • GATE OF ANATOLIA • BIG CHEFSS-ARMUTLU • AKIN TEKSTİL-ÇORLU • ASLI BÖREK • BEYAZ GÜVERCİN OTEL • MASLAK-HAS OTO • FENERBAHÇE MARİNA CAFE • HACI STEAK HOUSE • SAKARYA YENİGÜN İ.Ö.O • RİZE SPOR VE GENÇLİK MERKEZİ • BURSA VE MUĞLA TOKİ KONUTLARI • TOKİ OTOPARK-GAZİANTEP • GALATASARAY MÜZESİ-İSTANBUL • DURSUNBEY İMAM HATİP SPOR SALONU • BİNGÖL 16 DERSLİKLİ OKUL VE 200 KİŞİLİK PANSİYON • ÇANAKKALE 18 MART ÜNİVERSİTESİ TERZİOĞLU YERLEŞKESİ • WM PLAZA



ERA KOLEJLERİ • SULTAN FATİH KOLEJİ • AKDENİZ ÜNİVERSİTESİ • BEZMİALEM ÜNİVERSİTESİ TIP FAKÜLTESİ HASTANESİ • DÜZCE DEVLET HASTANESİ • BATMAN HASANKEYF DEVLET HASTANESİ • DİYARBAKIR HAZRO DEVLET HASTANESİ • AĞRI DEVLET HASTANESİ • ORDU ÜNİVERSİTESİ MÜZİK VE SAHNE SANATLARI FAKÜLTESİ ORDU • ÜNİVERSİTESİ ZİRAAT FAKÜLTESİ • KOZYATAĞI ANADOLU PLAZA-TEPE İNŞAAT • RİZE ÇOK AMAÇLI SPOR SALONU • TUZLA EMLAK KONUT-1 • TUZLA EMLAK KONUT-2 • PENDİK TOKİ KONUTLARI • ÇEKMEKÖY TOKİ KONUTLARI • NİDA KULE KOZYATAĞI (TAHİNCİOĞLU HOLDİNG) • SİDE PERISSIA OTEL (TAHİNCİOĞLU HOLDİNG) • ÜRGÜP PERISSIA OTEL (TAHİNCİOĞLU HOLDİNG) • KENT GIDA HOLDİNG BİNASI (TAHİNCİOĞLU HOLDİNG) BYCONCEPT • SULTANBEYLİ (BY GROUP A.Ş.) • BYOTEL KOZYATAĞI (BY GROUP A.Ş.) • TORUN CENTER MECİDİYEKÖY (TORUNLAR GYO) • KENT GIDA A.Ş. • MONDELEZ INTERNATIONAL • ALTINMARKA GIDA A.Ş. • ALTINKILIÇLAR KAHVE KAKAO A.Ş. • KAHVE DÜNYASI • TAFE GIDA A.Ş.



Architecture of high **quality air**



Fatih Mahallesi Yakacık Cd. Sancaktepe - İstanbul
P. +90 216 311 17 69 www.tezelish.com.tr - satis@tezelish.com.tr

* Update and Issue: July 2017

** Company reserves the right to make changes both on the documentation and products. In order to improve them. Therefore, this brochure/catalog does not make a commitment for the technical specifications. This data can not be used and reproduced without the permission of Tezel Isıtma Soğutma Havalandırma Ltd. Şti.