

Product Catalogue



CONTENTS



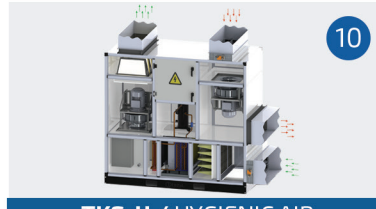
4

TKS / AIR HANDLING UNIT



8

TNAS / POOL DEHUMIDIFICATION UNIT



10

TKS-H / HYGIENIC AIR HANDLING UNITS



12

TKS-R / ROOFTOP



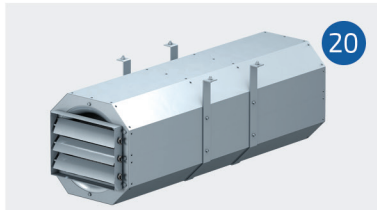
16

TIGK-HP / HEAT PUMP HEAT RECOVERY UNITS



18

TIGK / HEAT RECOVERY UNIT



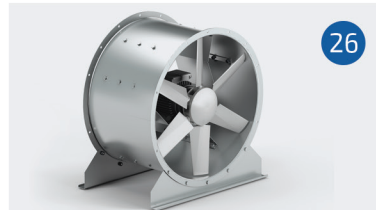
20

TDEF / AXIAL JET FAN



24

TDEF / SMOKE EXHAUST FAN



26

TKAF / AXIAL FAN



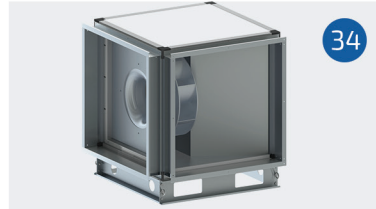
26

THMF-E / ELECTROSTATIC FILTER KITCHEN FAN UNIT



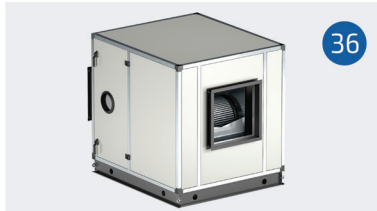
32

THMF / KITCHEN FAN UNIT



34

TMF / KITCHEN EXHUST FAN



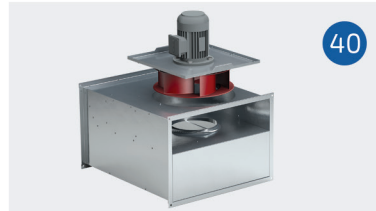
36

THF / VENTILATION UNIT



38

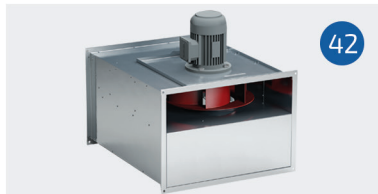
TEH / VENTILATION UNIT



40

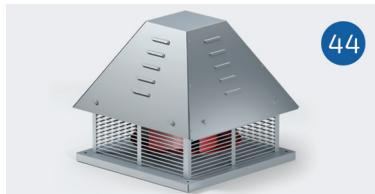
TKMF / DUCT TYPE KITCHEN FAN

export@tezelish.com.tr - satis@tezelish.com.tr



42

TKMF-EX / DUCT TYPE EXPROOF FAN



44

TBF / ROOF FAN WITH HORIZONTAL THROW MOTOR OUT OF AIR FLOW



46

TDBF / ROOF FAN WITH VERTICAL THROW



48

TDKF / RECTANGLE AIR DUCT TYPE FAN



50

TCF / ROOF FAN WITH HORIZONTAL THROW



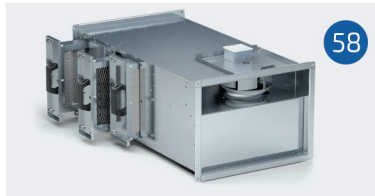
52

TDCF / ROOF FAN WITH VERTICAL THROW



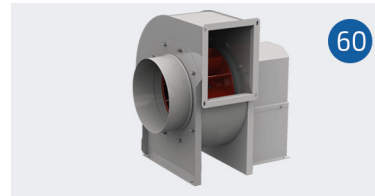
54

TAKF / ACOUSTIC FAN DUCT TYPE



58

TKSF / DUCT TYPE FRESH AIR FAN FOR SHELTER



60

TSF-A / LOW PRESSURE RADIAL FANS



62

TYKF / CYLINDRICAL IN-LINE RADIAL FANS



64

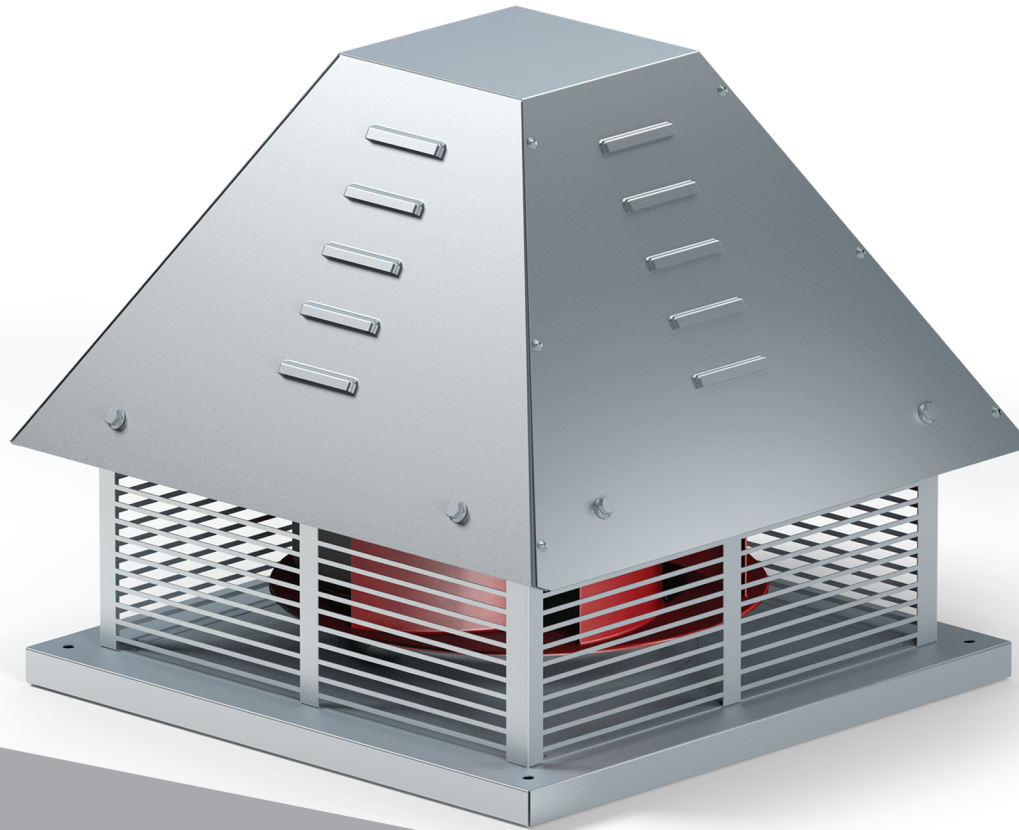
TDA / AXIAL FANS



66

CERTIFICATE





ROOF FAN WITH HORIZONTAL
THROW MOTOR OUT OF
AIR FLOW

Model Info

PRODUCT CODE	VOLTAGE (V)	FREQUENCY (Hz)	POWER (kW)	SPEED (Rpm)	SOUND LEVEL dB(A)	AIRFLOW (m ³ /h)			
						100Pa	200Pa	300Pa	400Pa
TBF35	380	50	0,75	1450	73,00	2990	2498	1820	-
TBF40	380	50	0,75	1450	75,00	4304	3792	3167	2275
TBF45	380	50	1,1	1450	77,00	-	5628	5036	4246
TBF50	380	50	1,5	1450	78,00	-	8306	7690	6950
TBF56	380	50	2,2	1450	80,00	-	12032	11350	10600
TBF63	380	50	4	1450	80,00	-	-	16980	16200



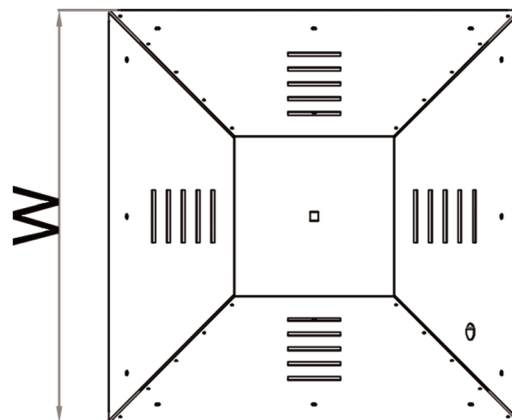
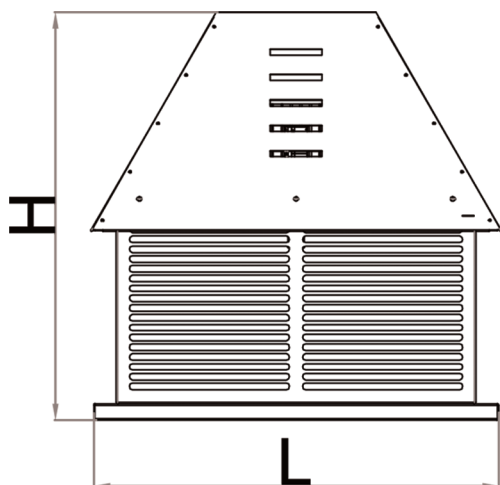
VFDs allow you to match the speed of the motor-driven equipment to the load requirement. There is no other method of AC electric motor control that allows you to accomplish this.

TBF

- Body is manufactured from galvanized steel plate and it is RAL 9002 Pelectro-static powder painted.
- High efficiency NICOTRA plug fans with high efficiency selected on computer environment with special selection program are used.
- Engine air flow is left out thus, it is not affected from oily and hot exhaust air.
- Overheating of the engine is prevented by means of the air entry grills at the roof entry.
- Its compact structure enables easy and convenient assembly.
- By means of its removable top, easy access and intervention to the engine and fan is possible.
- By means of its protective sheet plate, any external intervention from foreign objects which may contact with the fan while the engine is working will be prevented.

Dimensions

MODEL	H	L	W
TBF35	525	470	470
TBF40	680	570	570
TBF45	625	620	620
TBF50	680	750	750
TBF56	730	800	800
TBF63	765	950	950





Architecture of high **quality air**



Fatih Mahallesi Yakacık Cd. Sancaktepe - İstanbul - TURKEY

www.tezesh.com.tr



+90 216 311 17 69

satis@tezesh.com.tr



+90 554 534 78 63

export@tezesh.com.tr



+90 506 365 62 54

export@tezesh.com.tr