

Product Catalogue



CONTENTS



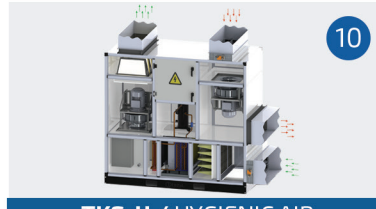
4

TKS / AIR HANDLING UNIT



8

TNAS / POOL DEHUMIDIFICATION UNIT



10

TKS-H / HYGIENIC AIR HANDLING UNITS



12

TKS-R / ROOFTOP



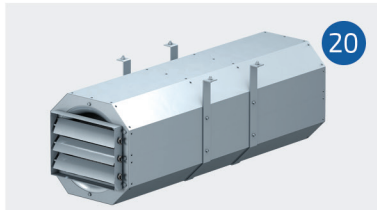
16

TIGK-HP / HEAT PUMP HEAT RECOVERY UNITS



18

TIGK / HEAT RECOVERY UNIT



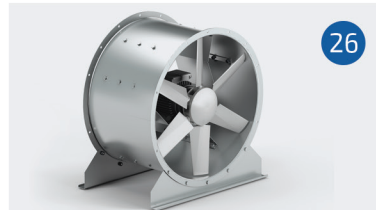
20

TDEF / AXIAL JET FAN



24

TDEF / SMOKE EXHAUST FAN



26

TKAF / AXIAL FAN



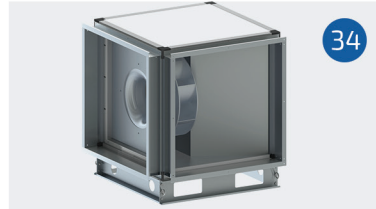
26

THMF-E / ELECTROSTATIC FILTER KITCHEN FAN UNIT



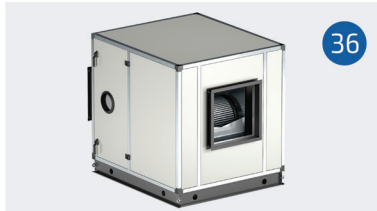
32

THMF / KITCHEN FAN UNIT



34

TMF / KITCHEN EXHUST FAN



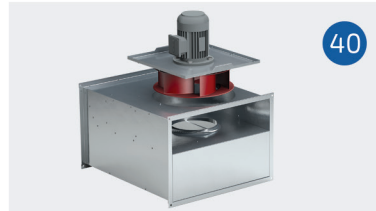
36

THF / VENTILATION UNIT



38

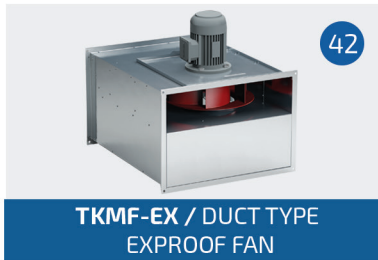
TEH / VENTILATION UNIT



40

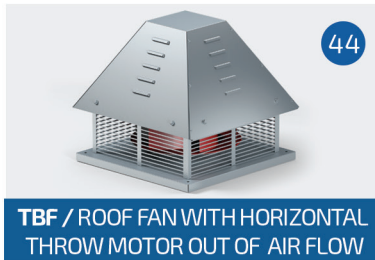
TKMF / DUCT TYPE KITCHEN FAN

export@tezelish.com.tr - satis@tezelish.com.tr



42

TKMF-EX / DUCT TYPE EXPROOF FAN



44

TBF / ROOF FAN WITH HORIZONTAL THROW MOTOR OUT OF AIR FLOW



46

TDBF / ROOF FAN WITH VERTICAL THROW



48

TDKF / RECTANGLE AIR DUCT TYPE FAN



50

TCF / ROOF FAN WITH HORIZONTAL THROW



52

TDCF / ROOF FAN WITH VERTICAL THROW



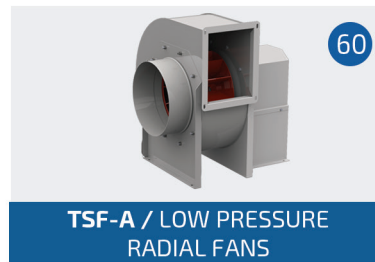
54

TAKF / ACOUSTIC FAN DUCT TYPE



58

TKSF / DUCT TYPE FRESH AIR FAN FOR SHELTER



60

TSF-A / LOW PRESSURE RADIAL FANS



62

TYKF / CYLINDRICAL IN-LINE RADIAL FANS



64

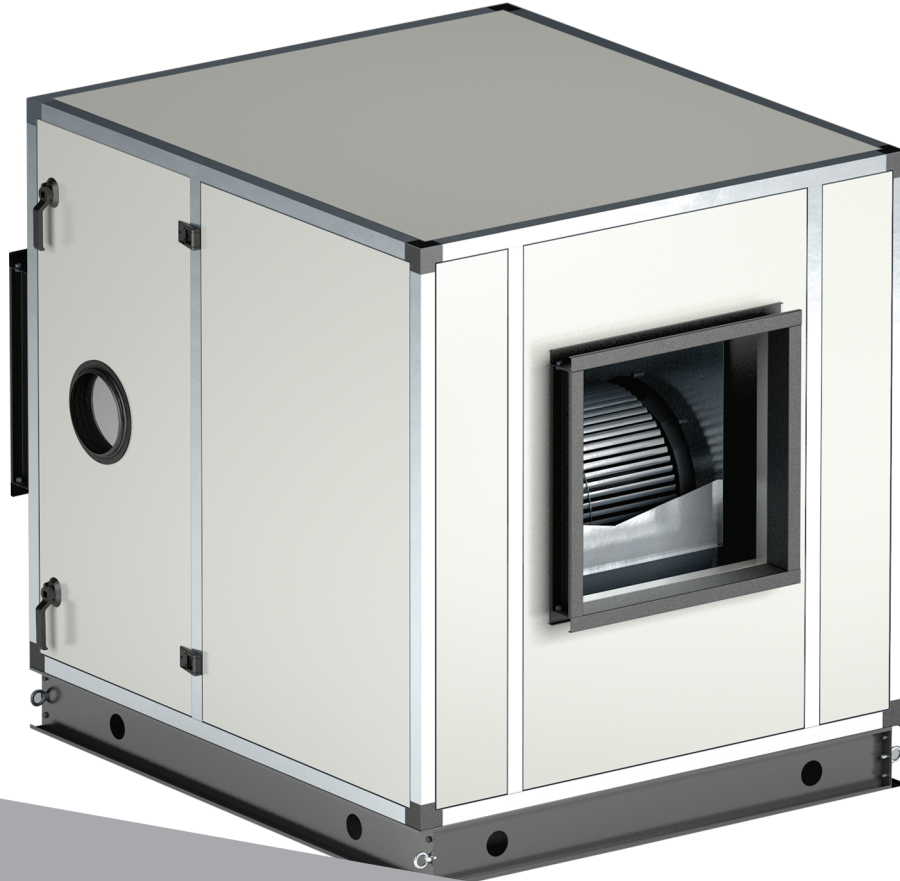
TDA / AXIAL FANS



66

CERTIFICATE





VENTILATION UNIT

Model Info

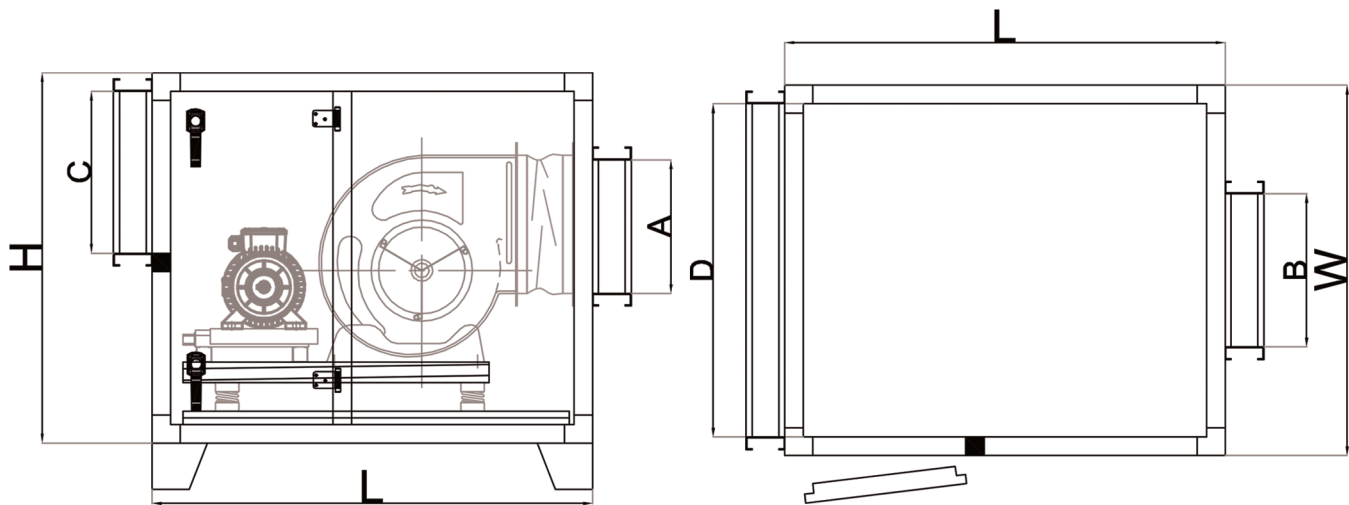
PRODUCT CODE	VOLTAGE (V)	FREQUENCY (Hz)	POWER (kW)	SOUND LEVEL dB(A)	AIRFLOW (m ³ /h)	PRESSURE (Pa)
THF7	380	50	0.75	73.00	2500	250
THF9	380	50	1.1	75.00	3500	350
THF10	380	50	1.5	77.00	5000	350
THF12	380	50	2.2	78.00	7500	350
THF15	380	50	3	80.00	10000	350
THF18	380	50	4	82.00	15000	350

THF

- Cells consist of 50 mm rock-wool insulated double-walled, electrostatic powder painted panels.
- 40" aluminium profiles exclusively rolled for our company are used.
- Sound volume is very low thanks to double-wall panels.
- Thanks to its compact design and easily replaceable suction/lift-force features, they can perform aspiration and ventilation functions.
- Full impermeability/water tightness can be maintained by means of a special sealing system
- Manufactured in line with TSE 60335-1 and TSE 60335-2-80 standards.

Dimensions

MODEL	L	H	W	A	B	C	D
THF7	820	650	650	210	230	250	570
THF9	900	700	700	260	300	300	620
THF10	950	800	800	290	330	350	720
THF12	1050	900	900	340	395	420	820
THF15	1150	1000	1000	405	470	500	920





Architecture of high **quality air**



Fatih Mahallesi Yakacık Cd. Sancaktepe - İstanbul - TURKEY

www.tezesh.com.tr



+90 216 311 17 69

satis@tezesh.com.tr



+90 554 534 78 63

export@tezesh.com.tr



+90 506 365 62 54

export@tezesh.com.tr