

# Product Catalogue



# CONTENTS



4

**TKS / AIR HANDLING UNIT**



8

**TNAS / POOL DEHUMIDIFICATION UNIT**



10

**TKS-H / HYGIENIC AIR HANDLING UNITS**



12

**TKS-R / ROOFTOP**



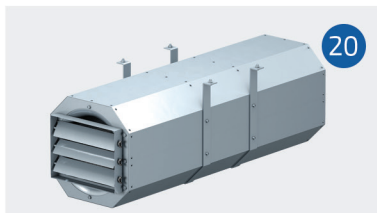
16

**TIGK-HP / HEAT PUMP HEAT RECOVERY UNITS**



18

**TIGK / HEAT RECOVERY UNIT**



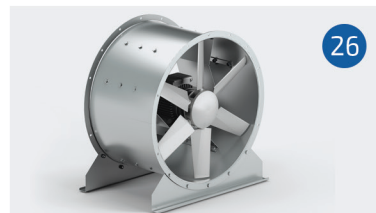
20

**TDEF / AXIAL JET FAN**



24

**TDEF / SMOKE EXHAUST FAN**



26

**TKAF / AXIAL FAN**



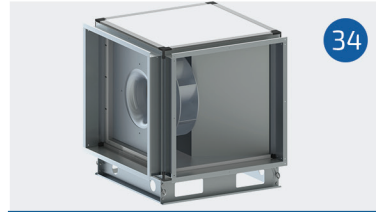
26

**THMF-E / ELECTROSTATIC FILTER KITCHEN FAN UNIT**



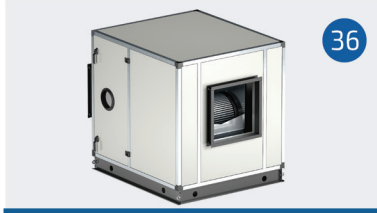
32

**THMF / KITCHEN FAN UNIT**



34

**TMF / KITCHEN EXHUST FAN**



36

**THF / VENTILATION UNIT**



38

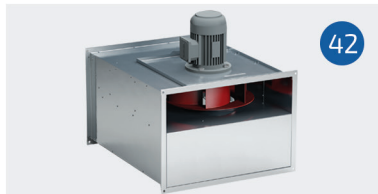
**TEH / VENTILATION UNIT**



40

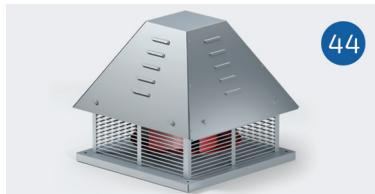
**TKMF / DUCT TYPE KITCHEN FAN**

[export@tezelish.com.tr](mailto:export@tezelish.com.tr) - [satis@tezelish.com.tr](mailto:satis@tezelish.com.tr)



42

**TKMF-EX / DUCT TYPE EXPROOF FAN**



44

**TBF / ROOF FAN WITH HORIZONTAL THROW MOTOR OUT OF AIR FLOW**



46

**TDBF / ROOF FAN WITH VERTICAL THROW**



48

**TDKF / RECTANGLE AIR DUCT TYPE FAN**



50

**TCF / ROOF FAN WITH HORIZONTAL THROW**



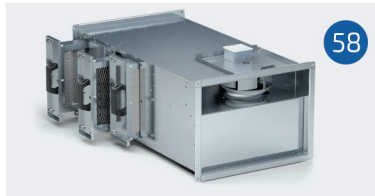
52

**TDCF / ROOF FAN WITH VERTICAL THROW**



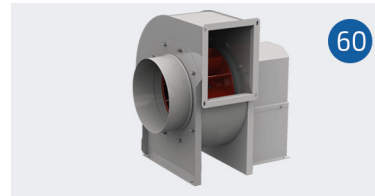
54

**TAKF / ACOUSTIC FAN DUCT TYPE**



58

**TKSF / DUCT TYPE FRESH AIR FAN FOR SHELTER**



60

**TSF-A / LOW PRESSURE RADIAL FANS**



62

**TYKF / CYLINDRICAL IN-LINE RADIAL FANS**



64

**TDA / AXIAL FANS**



66

**CERTIFICATE**







## ELECTROSTATIC FILTER KITCHEN FAN UNIT

### Model Info

PRODUCT CODE	AIRFLOW (m <sup>3</sup> /h)	PRESSURE (Pa)	POWER (kW)	FREQUENCY (Hz)	VOLTAGE (V)	SOUND LEVEL dB(A)
THMF-E50	5000	300	1,5	50	380	70
THMF-E75	7500	400	2,2	50	380	72
THMF-E100	10000	500	4	50	380	72
THMF-E150	15000	600	7,5	50	380	75
THMF-E225	22500	700	11	50	380	78



VFDs allow you to match the speed of the motor-driven equipment to the load requirement. There is no other method of AC electric motor control that allows you to accomplish this.

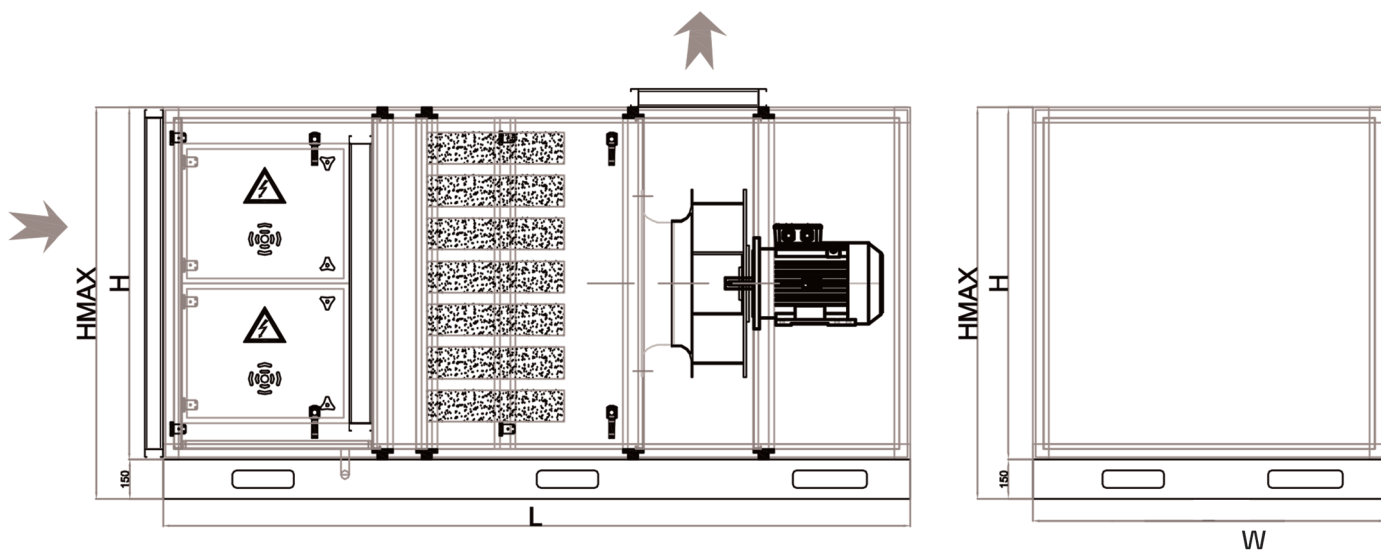


## THMF-E

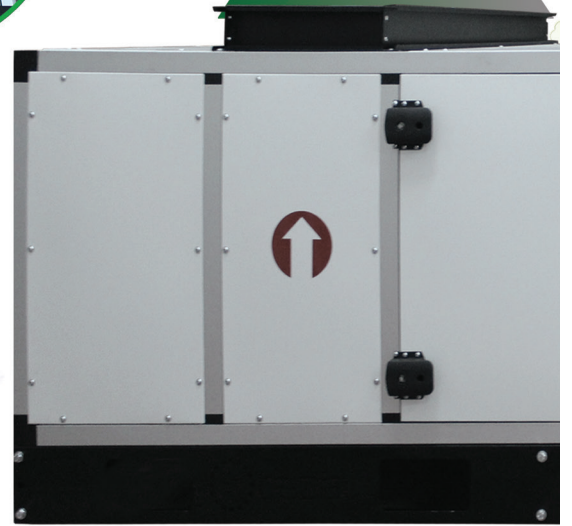
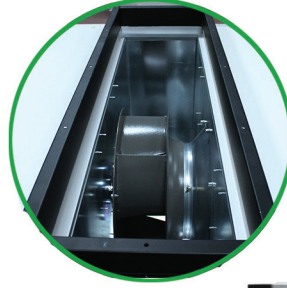
- With our devices, make TEZEL, Adhered to the air; Toxic chemical waste gas, oil, soot, odour and smoke molecules are loaded on the ionisation section with high voltage electric charge and adhered to the charged collecting surfaces in the collector sections like a magnet.
- Collective filter is easily removed from its place and after being washed and cleaned, it is mounted to its housing when dry. It is ready and functioning when the device is operated.
- Cells consist of 50 mm rockwool insulated double-walled, electrostatic powder painted panels.
- 40" aluminium profiles exclusively rolled for our company are used.
- Sound volume is very low thanks to double-wall panels.
- High efficiency NICOTRA plug fans with high efficiency selected on computer environment with special selection program are used.
- Engine air flow is left out thus; it is not affected from oily and hot exhaust air.

## Dimensions

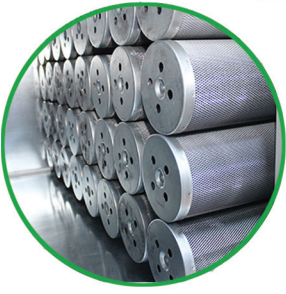
MODEL	L	H	W	HMAX
THMF-E50	2650	750	1350	900
THMF-E75	2650	750	1950	900
THMF-E100	2650	1350	1350	1500
THMF-E150	2860	1350	1950	1500
THMF-E225	2860	1950 </td <td>1950</td> <td>2100</td>	1950	2100



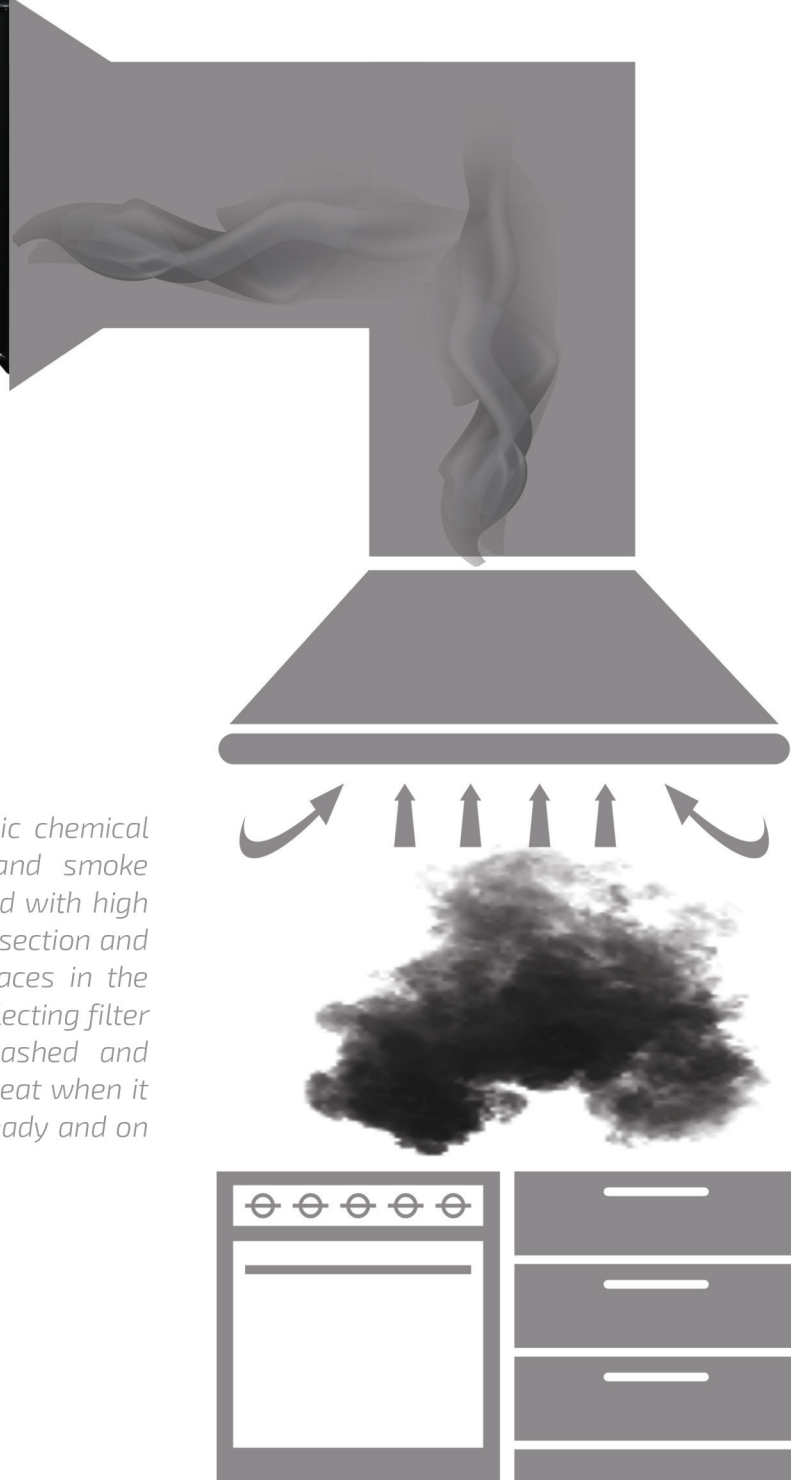
DIRECT COUPLE FAN



## ODOR HOLDER FILTERS



## ELECTROSTATIC FILTER



*With our TEZEL Brand Devices, the toxic chemical waste gas, oil, grease, soot, odor and smoke molecules adhered on the air are loaded with high voltage electric charge in the ionization section and adhered to the counter-collecting surfaces in the collector sections like a magnet. The collecting filter is easily removed from its place, washed and cleaned, and then installed back to its seat when it dries. When the device is started, it is ready and on duty.*








## Architecture of high **quality air**



Fatih Mahallesi Yakacık Cd. Sancaktepe - İstanbul - TURKEY

[www.tezelish.com.tr](http://www.tezelish.com.tr)

	+90 216 311 17 69	satis@tezelish.com.tr
	+90 554 534 78 63	export@tezelish.com.tr
	+90 506 365 62 54	export@tezelish.com.tr