

Product Catalogue



CONTENTS



4

TKS / AIR HANDLING UNIT



8

TNAS / POOL DEHUMIDIFICATION UNIT



10

TKS-H / HYGIENIC AIR HANDLING UNITS



12

TKS-R / ROOFTOP



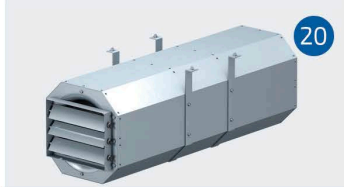
16

TIGK-HP / HEAT PUMP HEAT RECOVERY UNITS



18

TIGK / HEAT RECOVERY UNIT



20

TDEF / AXIAL JET FAN



24

TDEF / SMOKE EXHAUST FAN



26

TKAF / AXIAL FAN



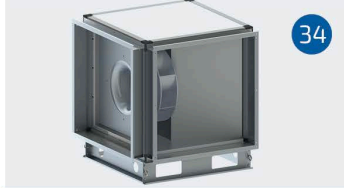
26

THMF-E / ELECTROSTATIC FILTER KITCHEN FAN UNIT



32

THMF / KITCHEN FAN UNIT



34

TMF / KITCHEN EXHUST FAN



36

THF / VENTILATION UNIT



38

TEH / VENTILATION UNIT



40

TKMF / DUCT TYPE KITCHEN FAN



42

TKMF-EX / DUCT TYPE EXPROOF FAN



44

TBF / ROOF FAN WITH HORIZONTAL THROW MOTOR OUT OF AIR FLOW



46

TDBF / ROOF FAN WITH VERTICAL THROW



48

TDKF / RECTANGLE AIR DUCT TYPE FAN



50

TCF / ROOF FAN WITH HORIZONTAL THROW



52

TDCF / ROOF FAN WITH VERTICAL THROW



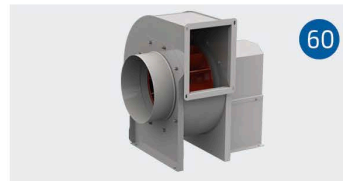
54

TAKF / ACOUSTIC FAN DUCT TYPE



58

TKSF / DUCT TYPE FRESH AIR FAN FOR SHELTER



60

TSF-A / LOW PRESSURE RADIAL FANS



62

TYKF / CYLINDRICAL IN-LINE RADIAL FANS



64

TDA / AXIAL FANS



66

CERTIFICATE





KITCHEN FAN UNIT

Model Info

PRODUCT CODE	VOLTAGE (V)	FREQUENCY (Hz)	POWER (kW)	SPEED (Rpm)	SOUND LEVEL dB(A)	AIRFLOW (m ³ /h)	PRESSURE (Pa)
THMF35	380	50	0,75	1450	73,00	2.000	200
THMF40	380	50	0,75	1450	75,00	3.000	200
THMF45	380	50	1,1	1450	77,00	5.000	200
THMF50	380	50	1,5	1450	78,00	7.000	300
THMF56	380	50	2,2	1450	80,00	10.000	400
THMF63	380	50	4	1450	80,00	15.350	500
THMF71	380	50	7,5	1450	80,00	24.000	500



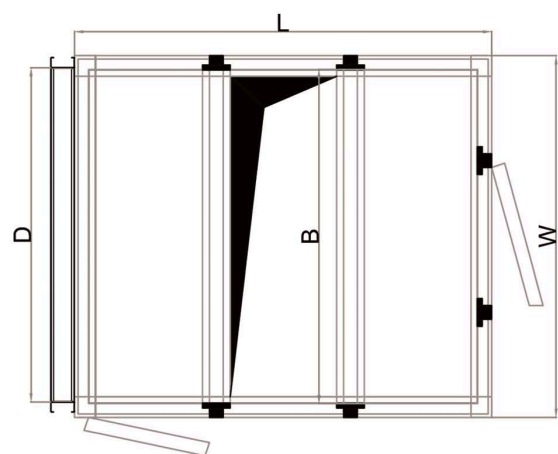
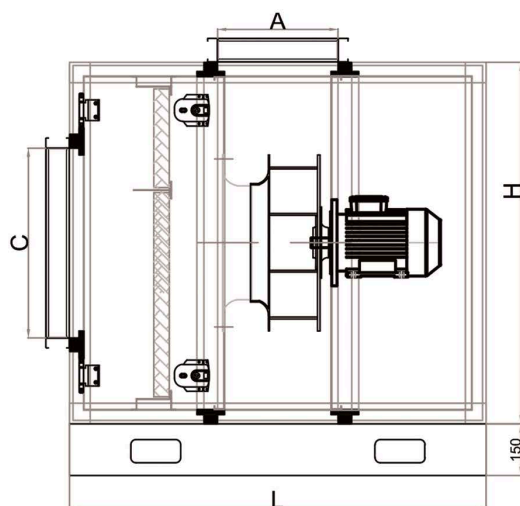
VFDs allow you to match the speed of the motor-driven equipment to the load requirement. There is no other method of AC electric motor control that allows you to accomplish this.

THMF

- Cells consist of 50 mm rock-wool insulated double-walled, electrostatic powder painted panels.
- 40" aluminium profiles exclusively rolled for our company are used.
- Sound volume is very low thanks to double-wall panels.
- High efficiency; NICOTRA plug fans with high efficiency selected on computer environment with special selection program are used.
- Engine air flow is left out thus, it is not affected from oily and hot exhaust air.
- Metal filter is used on demand.
- Manufactured in line with TSE 60335-1 and TSE 60335-2-80 standards.

Dimensions

MODEL	L	H	W	A	B	C	D
THMF35	1030	750	750	275	670	400	400
THMF40	1100	750	750	300	670	450	450
THMF45	1135	750	1050	325	970	500	500
THMF50	1210	1050	1050	350	970	550	970
THMF56	1230	1050	1050	370	970	550	970
THMF63	1460	1350	1350	400	1270	650	1270
THMF71	1650	1650	1650	425	1570	700	1570





Architecture of high **quality air**



Fatih Mahallesi Yakacık Cd. Sancaktepe - İstanbul - TURKEY

www.tezelish.com.tr

	+90 216 311 17 69	satis@tezelish.com.tr
	+90 554 534 78 63	export@tezelish.com.tr
	+90 506 365 62 54	export@tezelish.com.tr