

# Product Catalogue



# CONTENTS



4

**TKS / AIR HANDLING UNIT**



8

**TNAS / POOL DEHUMIDIFICATION UNIT**



10

**TKS-H / HYGIENIC AIR HANDLING UNITS**



12

**TKS-R / ROOFTOP**



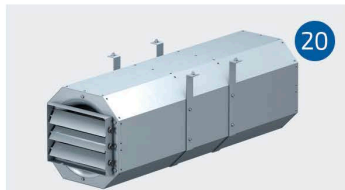
16

**TIGK-HP / HEAT PUMP HEAT RECOVERY UNITS**



18

**TIGK / HEAT RECOVERY UNIT**



20

**TDEF / AXIAL JET FAN**



24

**TDEF / SMOKE EXHAUST FAN**



26

**TKAF / AXIAL FAN**



26

**THMF-E / ELECTROSTATIC FILTER KITCHEN FAN UNIT**



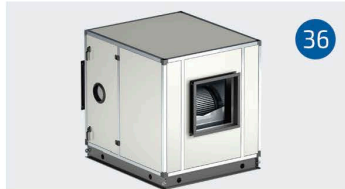
32

**THMF / KITCHEN FAN UNIT**



34

**TMF / KITCHEN EXHUST FAN**



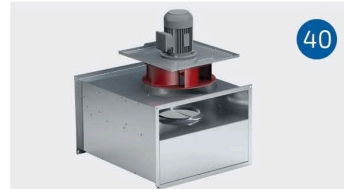
36

**THF / VENTILATION UNIT**



38

**TEH / VENTILATION UNIT**



40

**TKMF / DUCT TYPE KITCHEN FAN**



42

**TKMF-EX / DUCT TYPE EXPROOF FAN**



44

**TBF / ROOF FAN WITH HORIZONTAL THROW MOTOR OUT OF AIR FLOW**



46

**TDBF / ROOF FAN WITH VERTICAL THROW**



48

**TDKF / RECTANGLE AIR DUCT TYPE FAN**



50

**TCF / ROOF FAN WITH HORIZONTAL THROW**



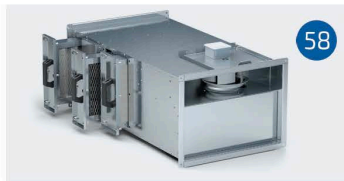
52

**TDCF / ROOF FAN WITH VERTICAL THROW**



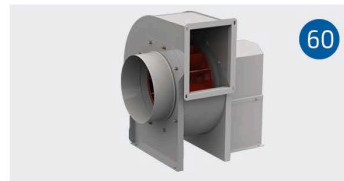
54

**TAKF / ACOUSTIC FAN DUCT TYPE**



58

**TKSF / DUCT TYPE FRESH AIR FAN FOR SHELTER**



60

**TSF-A / LOW PRESSURE RADIAL FANS**



62

**TYKF / CYLINDRICAL IN-LINE RADIAL FANS**



64

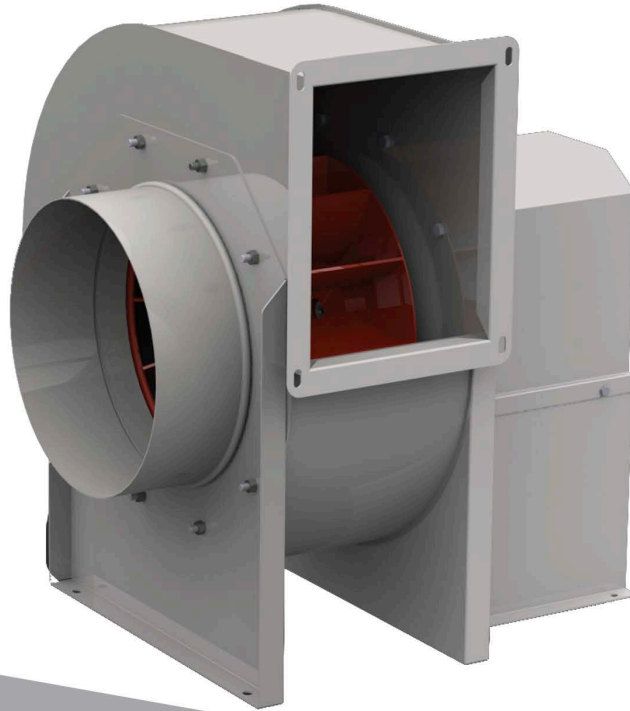
**TDA / AXIAL FANS**



66

**CERTIFICATE**





## LOW PRESSURE RADIAL FANS

### Model Info

| PRODUCT CODE | VOLTAGE (V) | FREQUENCY (Hz) | POWER (W) | SPEED (Rpm) | AIRFLOW (m <sup>3</sup> /h) | PRESSURE (Pa) | WEIGHT (Kg) |
|--------------|-------------|----------------|-----------|-------------|-----------------------------|---------------|-------------|
| TSF-A1       | 230 / 380   | 50             | 0,37      | 1400        | 1500                        | 400           | 24          |
| TSF-A2       | 230 / 380   | 50             | 0,75      | 1400        | 2500                        | 450           | 34          |
| TSF-A3       | 230 / 380   | 50             | 1.1       | 1400        | 3500                        | 600           | 42          |
| TSF-A4       | 230 / 380   | 50             | 1.5       | 1400        | 4500                        | 700           | 47          |
| TSF-A5       | 230 / 380   | 50             | 2.2       | 1400        | 6000                        | 750           | 58          |
| TSF-A6       | 230 / 380   | 50             | 3         | 1400        | 6500                        | 800           | 60          |
| TSF-A7       | 380         | 50             | 4         | 1400        | 7000                        | 950           | 67          |
| TSF-A8       | 380         | 50             | 5.5       | 1400        | 9000                        | 1200          | 106         |
| TSF-A9       | 380         | 50             | 7.5       | 1400        | 12000                       | 1500          | 134         |

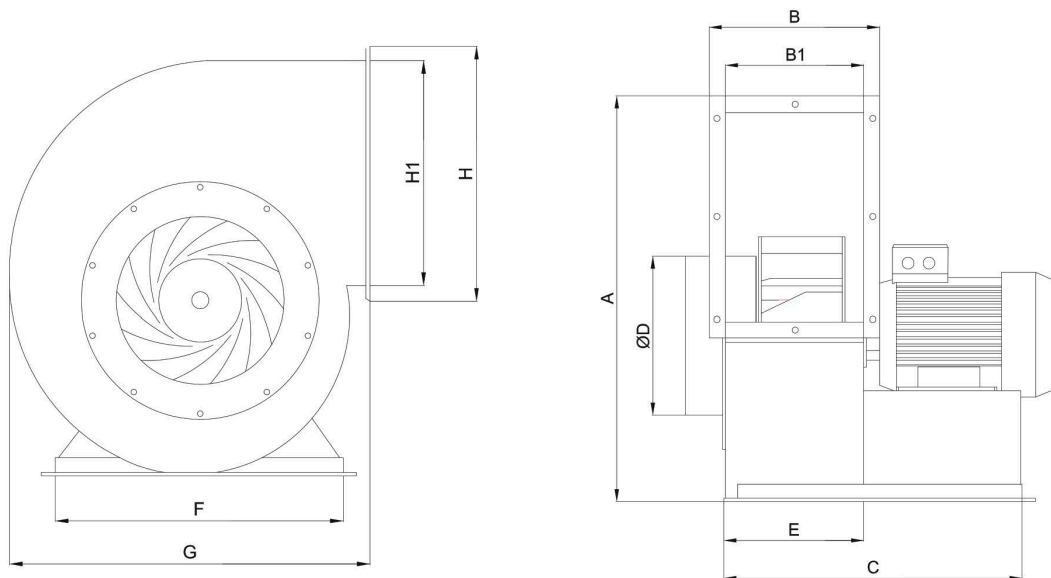
# TSF-A

- Has air flow between 2.000 m<sup>3</sup>/h and 12.500 m<sup>3</sup>/h.
- Casing and impeller are made from DKP sheet metal and protected from corrosion by cellulose paint.
- The propellers of our industrial fans can be manufactured optionally as backward curved and forward curved impeller depending on utilization.
- In the fans, directly coupled motors with the brands of GAMAK, VOLT, WATT are used.
- As an option, a speed control device can be used to adjust the air flow and pressure.
- Insulation : Class B
- Protection : IP 44

Application Areas : Fans are suitable for use the circulation of the clean air free of dust, the fans with backward curved propellers are for the circulation of the air with oiled, viscous and less dusty.

## Dimensions

| MODEL   | A    | B   | B1  | C   | D   | E   | F   | G   | H   | H1  |
|---------|------|-----|-----|-----|-----|-----|-----|-----|-----|-----|
| TSF-A 1 | 500  | 215 | 160 | 390 | 180 | 160 | 300 | 410 | 250 | 200 |
| TSF-A 2 | 580  | 235 | 180 | 410 | 200 | 180 | 360 | 510 | 310 | 260 |
| TSF-A 3 | 660  | 260 | 200 | 490 | 240 | 200 | 410 | 530 | 320 | 270 |
| TSF-A 4 | 690  | 270 | 220 | 510 | 260 | 220 | 410 | 600 | 340 | 290 |
| TSF-A 5 | 730  | 280 | 230 | 600 | 300 | 230 | 475 | 630 | 370 | 320 |
| TSF-A 6 | 730  | 300 | 250 | 620 | 320 | 250 | 475 | 630 | 370 | 320 |
| TSF-A 7 | 790  | 310 | 250 | 650 | 320 | 250 | 560 | 660 | 430 | 380 |
| TSF-A 8 | 870  | 335 | 280 | 730 | 330 | 280 | 600 | 780 | 490 | 440 |
| TSF-A 9 | 1050 | 410 | 350 | 840 | 350 | 350 | 700 | 880 | 600 | 540 |





Architecture of high **quality air**



Fatih Mahallesi Yakacık Cd. Sancaktepe - İstanbul - TURKEY

[www.tezelish.com.tr](http://www.tezelish.com.tr)

|   |                   |  |
|---|-------------------|--|
|  | +90 216 311 17 69 | <a href="mailto:satis@tezelish.com.tr">satis@tezelish.com.tr</a>   |
|  | +90 554 534 78 63 | <a href="mailto:export@tezelish.com.tr">export@tezelish.com.tr</a> |
|  | +90 506 365 62 54 | <a href="mailto:export@tezelish.com.tr">export@tezelish.com.tr</a> |